

**RANGITĀNE O MANAWATU**  
**and**  
**THE TRUSTEES OF THE RANGITĀNE O MANAWATU SETTLEMENT**  
**TRUST**  
**and**  
**THE CROWN**

---

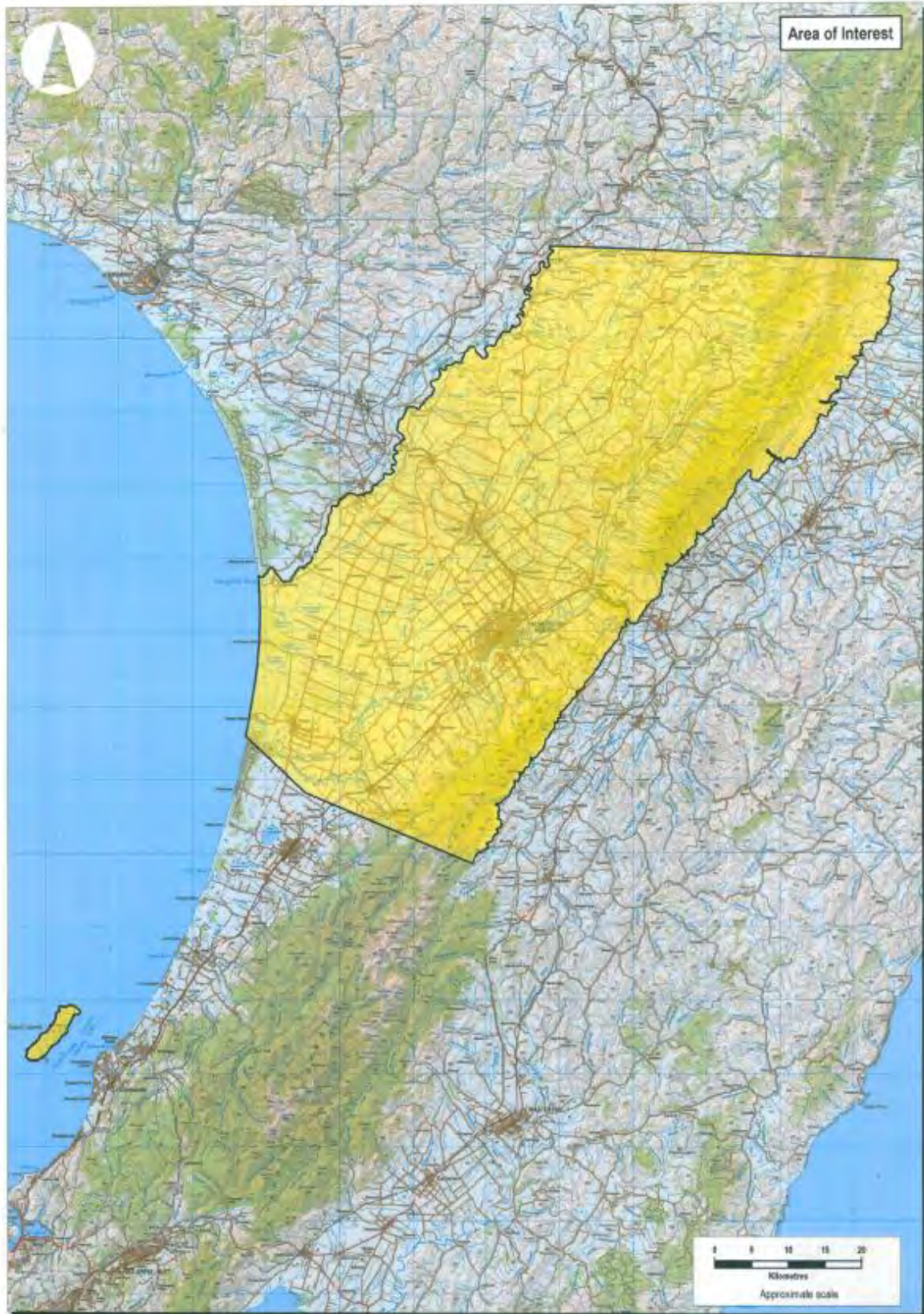
**DEED OF SETTLEMENT:**  
**ATTACHMENTS**

---

## TABLE OF CONTENTS

<b>1</b>	<b>AREA OF INTEREST .....</b>	<b>3</b>
<b>2</b>	<b>DEED PLANS .....</b>	<b>4</b>
<b>3</b>	<b>RFR LAND .....</b>	<b>31</b>
<b>4</b>	<b>DRAFT SETTLEMENT BILL .....</b>	<b>34</b>

## 1 AREA OF INTEREST





## 2 DEED PLANS



INITIALLED ATTACHMENTS SCHEDULE FOR PRESENTATION TO RANGITĀNE O MANAWATU FOR  
RATIFICATION PURPOSES

2 DEED PLANS





INITIALLED ATTACHMENTS SCHEDULE FOR PRESENTATION TO RANGITĀNE O MANAWATU FOR  
RATIFICATION PURPOSES

2 DEED PLANS





INITIALLED ATTACHMENTS SCHEDULE FOR PRESENTATION TO RANGITĀNE O MANAWATU FOR  
RATIFICATION PURPOSES

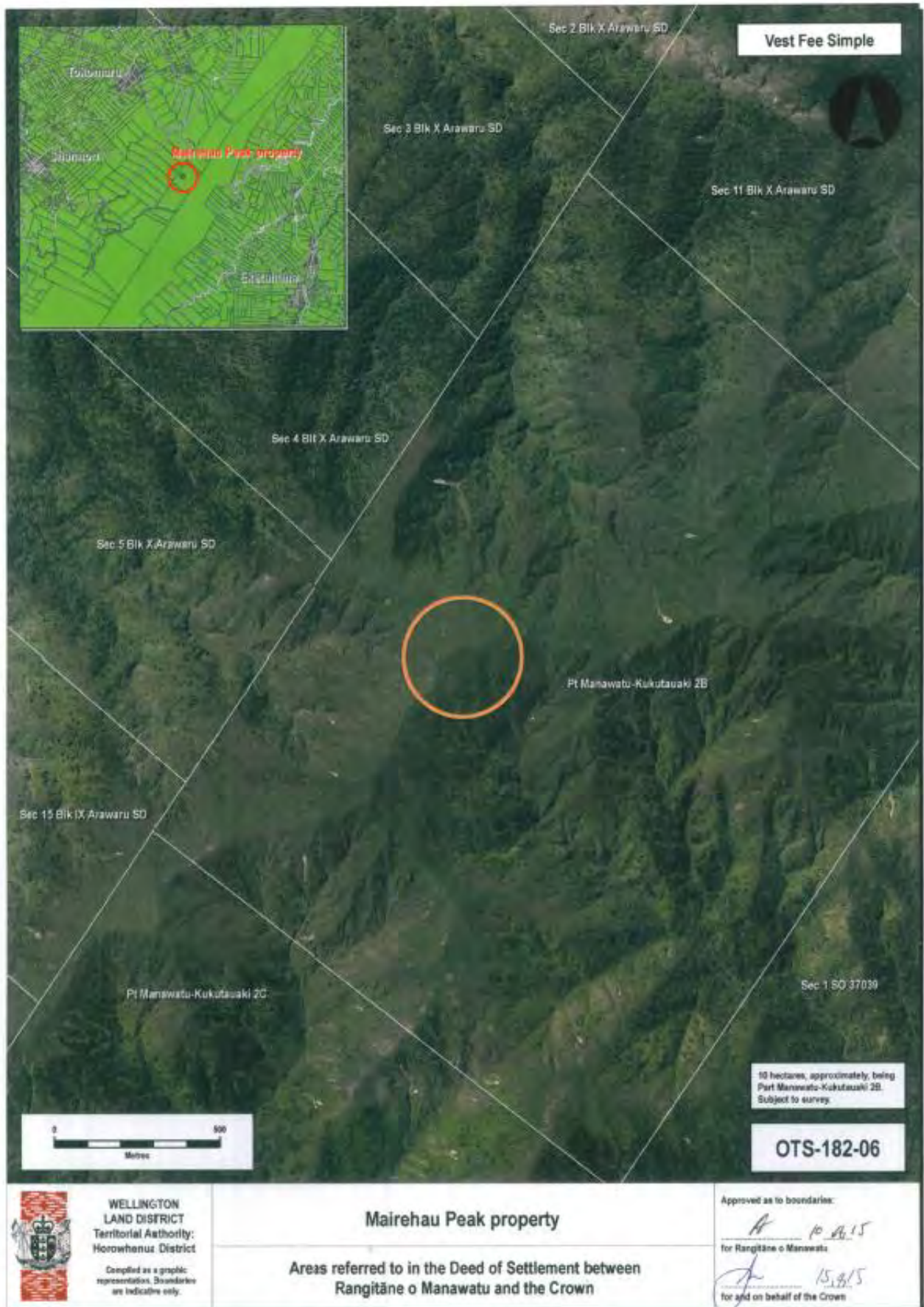
2 DEED PLANS





INITIALLED ATTACHMENTS SCHEDULE FOR PRESENTATION TO RANGITĀNE O MANAWATU FOR  
RATIFICATION PURPOSES

2 DEED PLANS





INITIALLED ATTACHMENTS SCHEDULE FOR PRESENTATION TO RANGITĀNE O MANAWATU FOR  
RATIFICATION PURPOSES

2 DEED PLANS



INITIALLED ATTACHMENTS SCHEDULE FOR PRESENTATION TO RANGITĀNE O MANAWATU FOR  
RATIFICATION PURPOSES

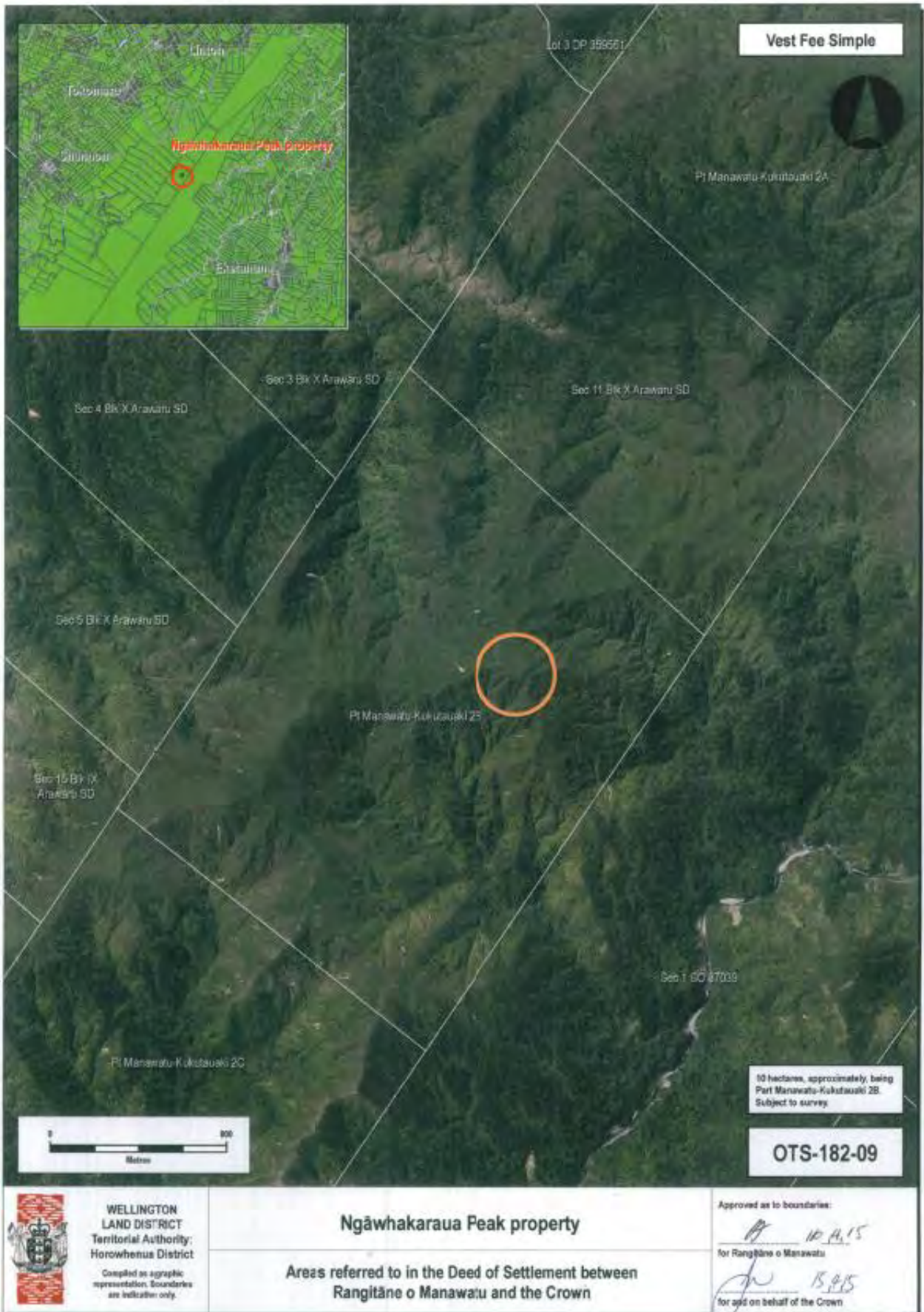
2 DEED PLANS





INITIALLED ATTACHMENTS SCHEDULE FOR PRESENTATION TO RANGITĀNE O MANAWATU FOR  
RATIFICATION PURPOSES

2 DEED PLANS





INITIALLED ATTACHMENTS SCHEDULE FOR PRESENTATION TO RANGITĀNE O MANAWATU FOR  
RATIFICATION PURPOSES

2 DEED PLANS





INITIALLED ATTACHMENTS SCHEDULE FOR PRESENTATION TO RANGITĀNE O MANAWATU FOR  
RATIFICATION PURPOSES

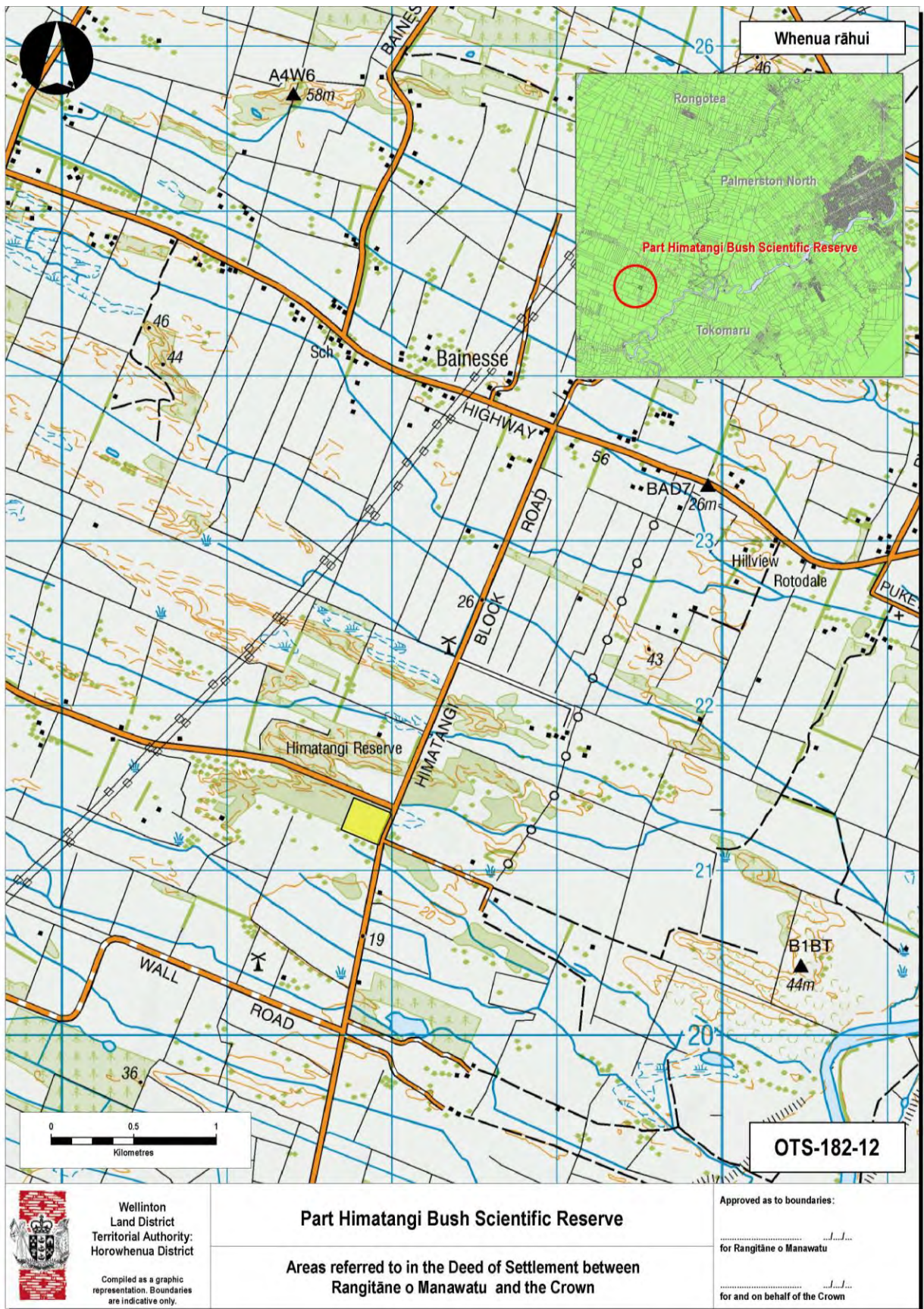
2 DEED PLANS





INITIALLED ATTACHMENTS SCHEDULE FOR PRESENTATION TO RANGITĀNE O MANAWATU FOR  
RATIFICATION PURPOSES

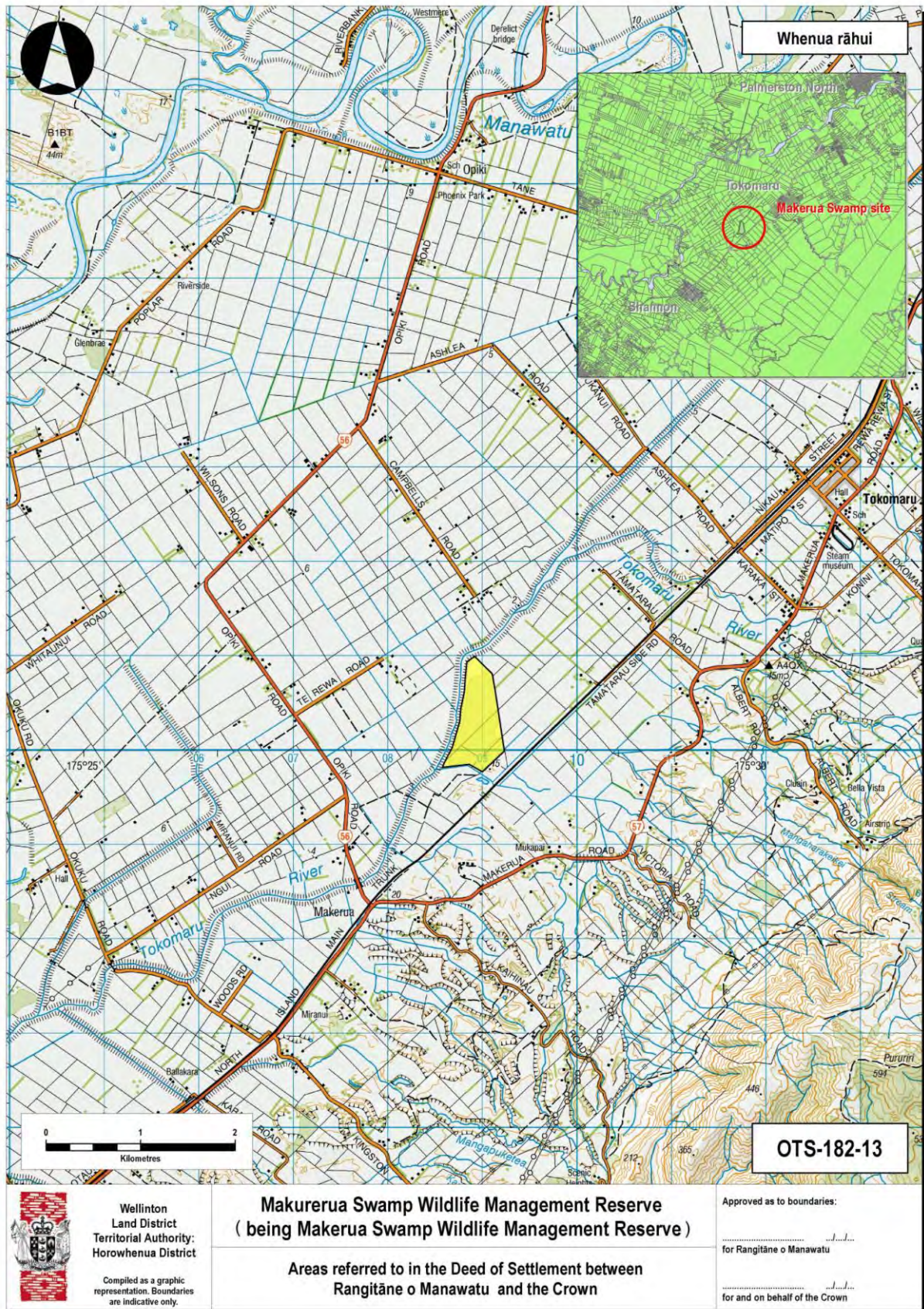
2 DEED PLANS





# INITIALLED ATTACHMENTS SCHEDULE FOR PRESENTATION TO RANGITĀNE O MANAWATU FOR RATIFICATION PURPOSES

## 2 DEED PLANS





INITIALLED ATTACHMENTS SCHEDULE FOR PRESENTATION TO RANGITĀNE O MANAWATU FOR  
RATIFICATION PURPOSES

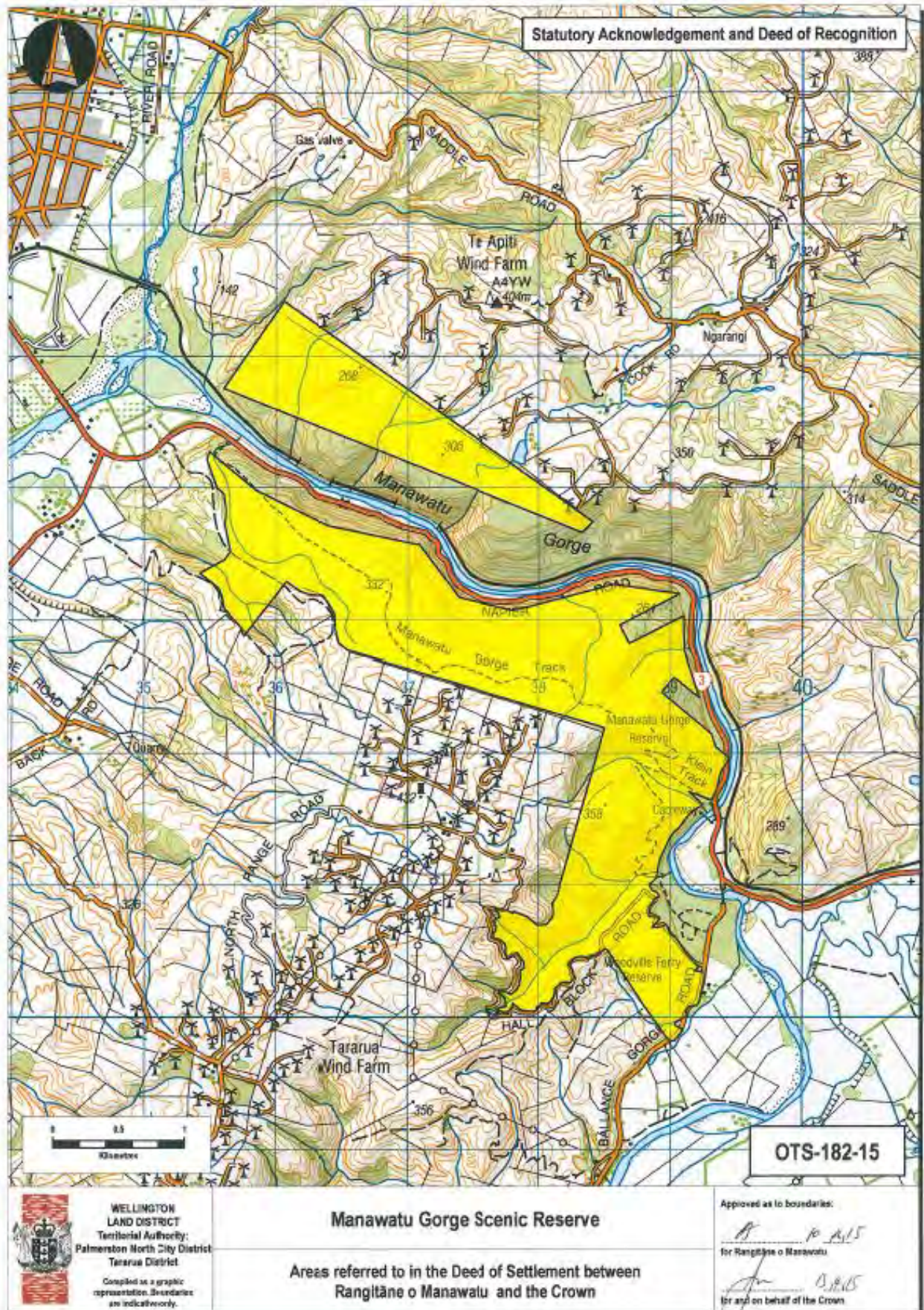
2 DEED PLANS





INITIALLED ATTACHMENTS SCHEDULE FOR PRESENTATION TO RANGITĀNE O MANAWATU FOR  
RATIFICATION PURPOSES

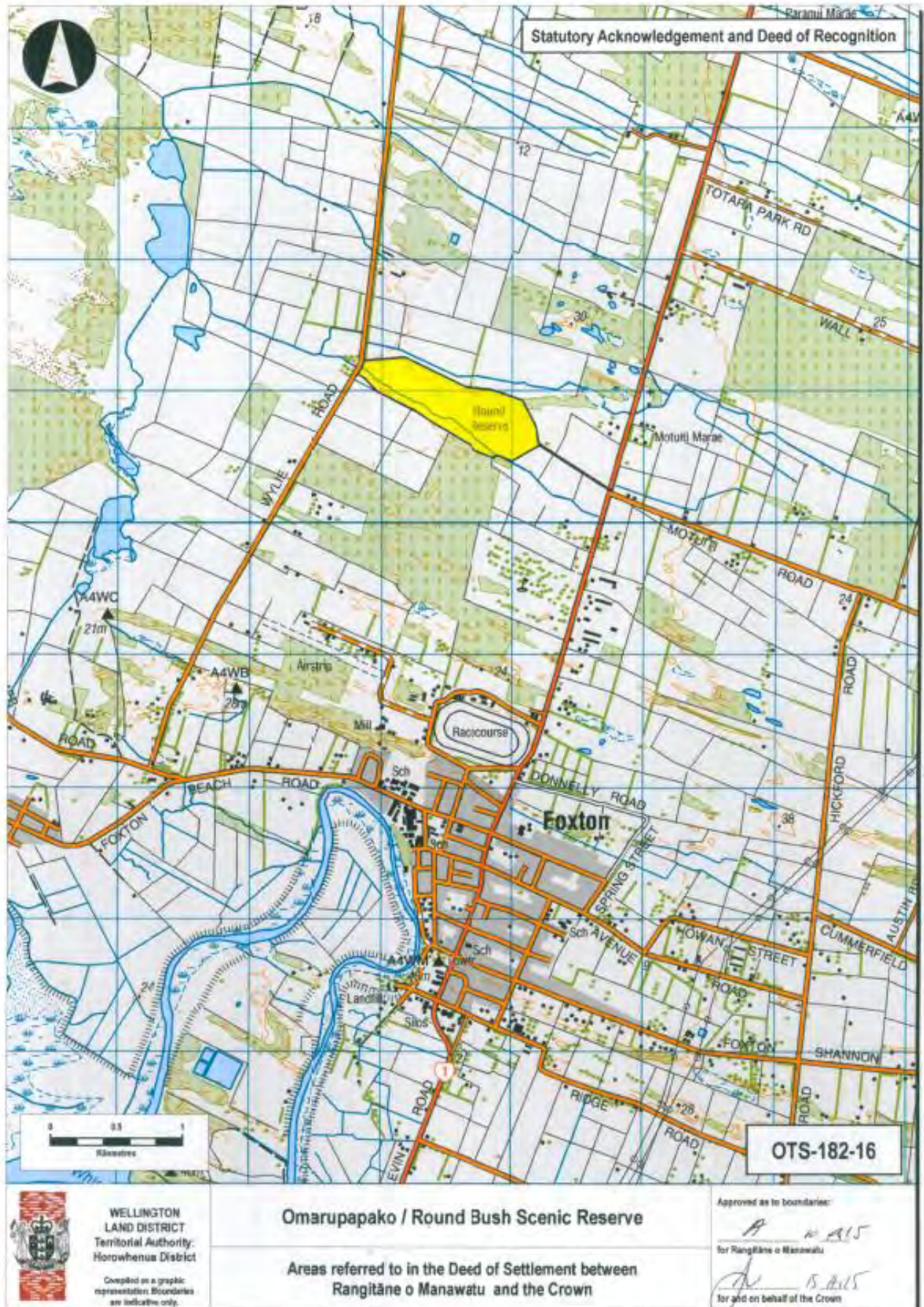
2 DEED PLANS





INITIALLED ATTACHMENTS SCHEDULE FOR PRESENTATION TO RANGITĀNE O MANAWATU FOR  
RATIFICATION PURPOSES

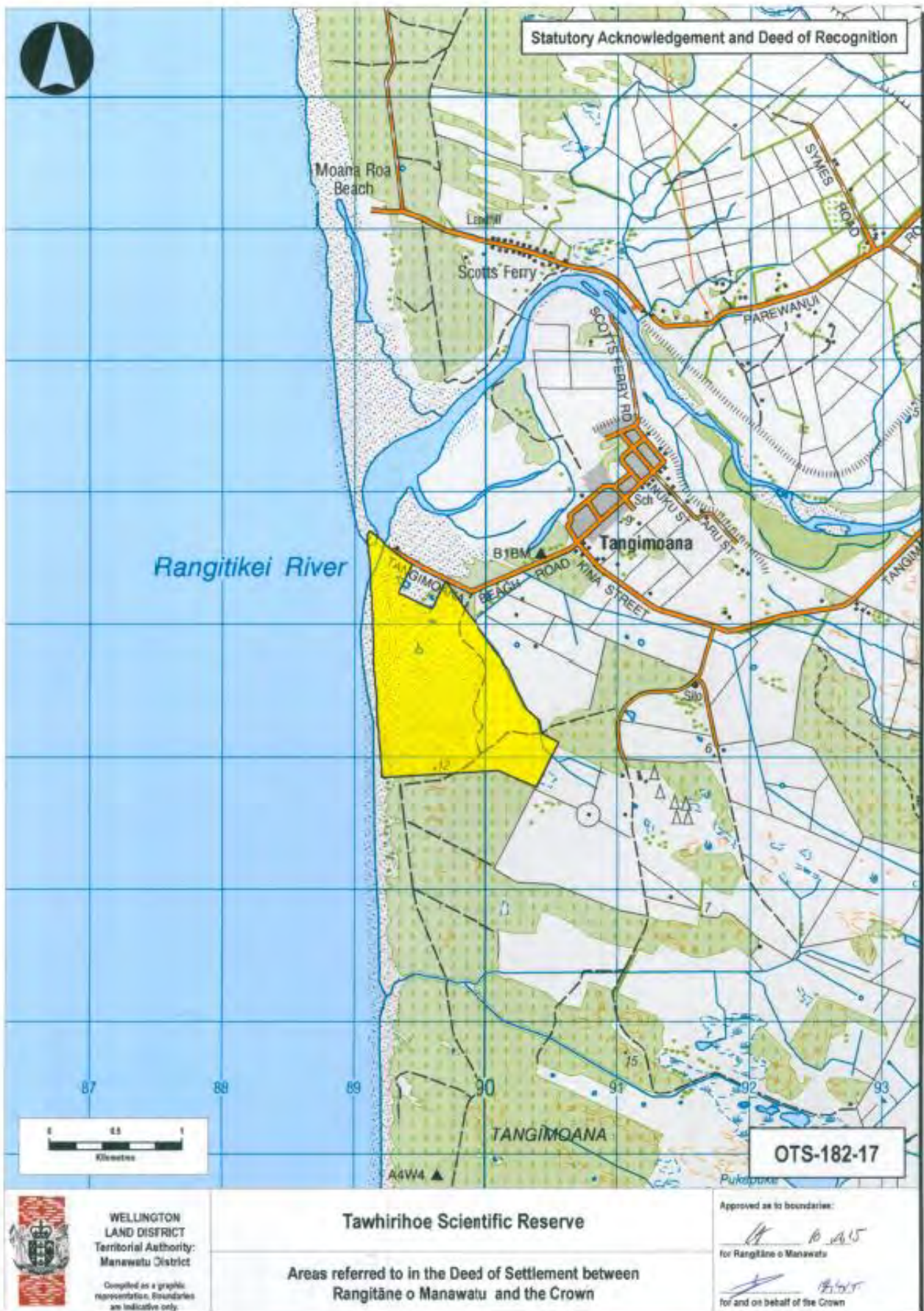
2 DEED PLANS





INITIALLED ATTACHMENTS SCHEDULE FOR PRESENTATION TO RANGITĀNE O MANAWATU FOR  
RATIFICATION PURPOSES

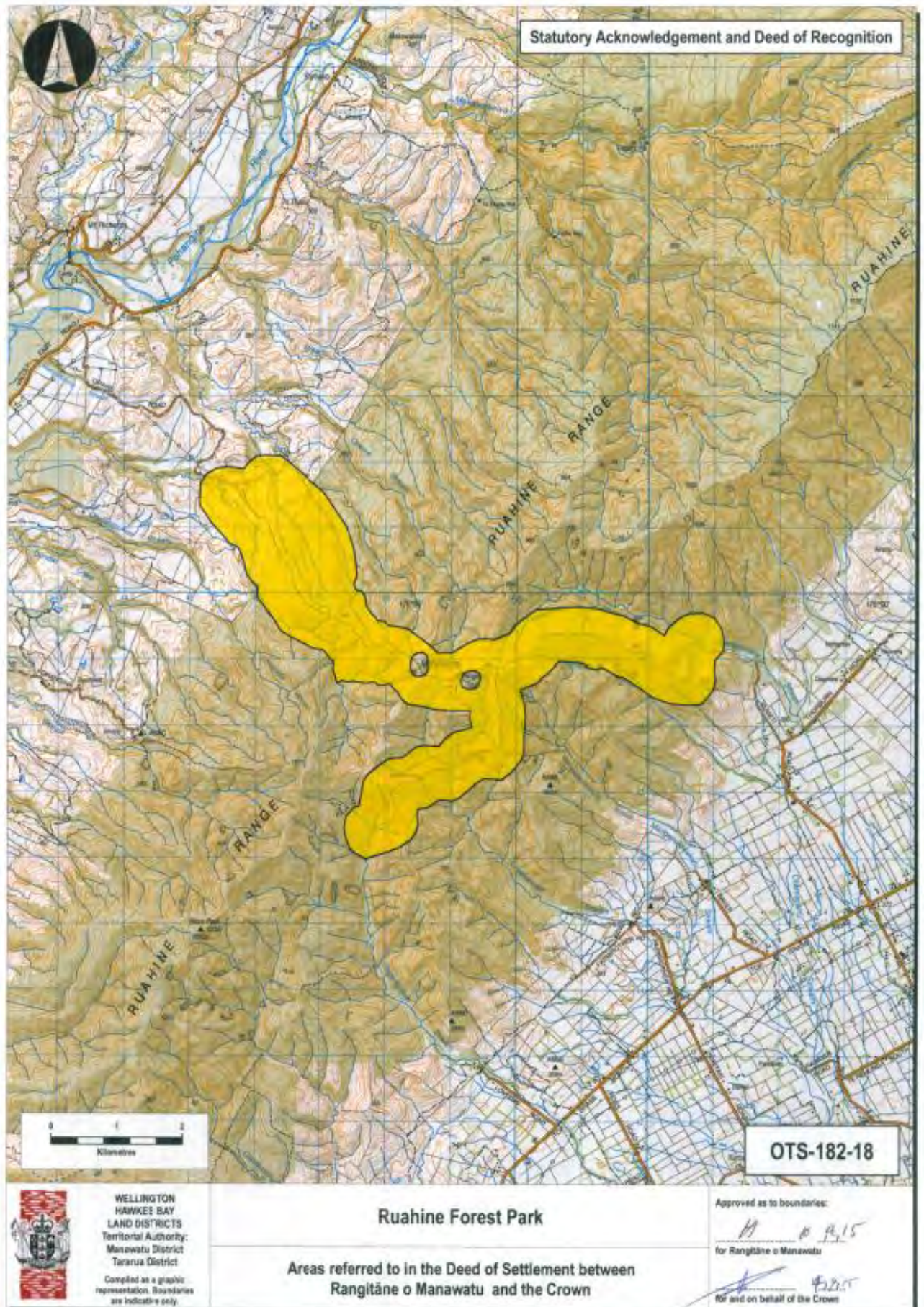
2 DEED PLANS





INITIALLED ATTACHMENTS SCHEDULE FOR PRESENTATION TO RANGITĀNE O MANAWATU FOR  
RATIFICATION PURPOSES

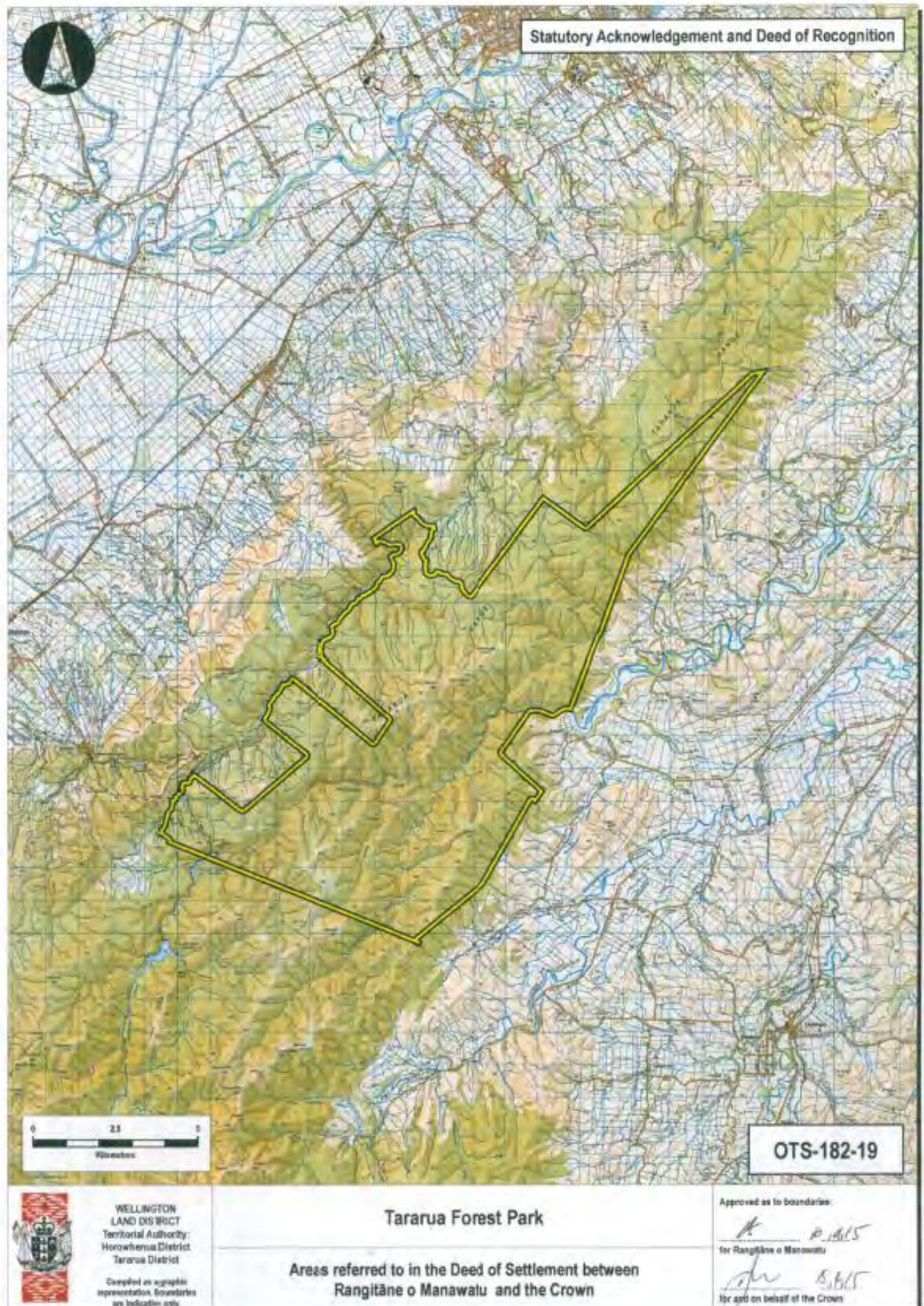
2 DEED PLANS





INITIALLED ATTACHMENTS SCHEDULE FOR PRESENTATION TO RANGITĀNE O MANAWATU FOR  
RATIFICATION PURPOSES

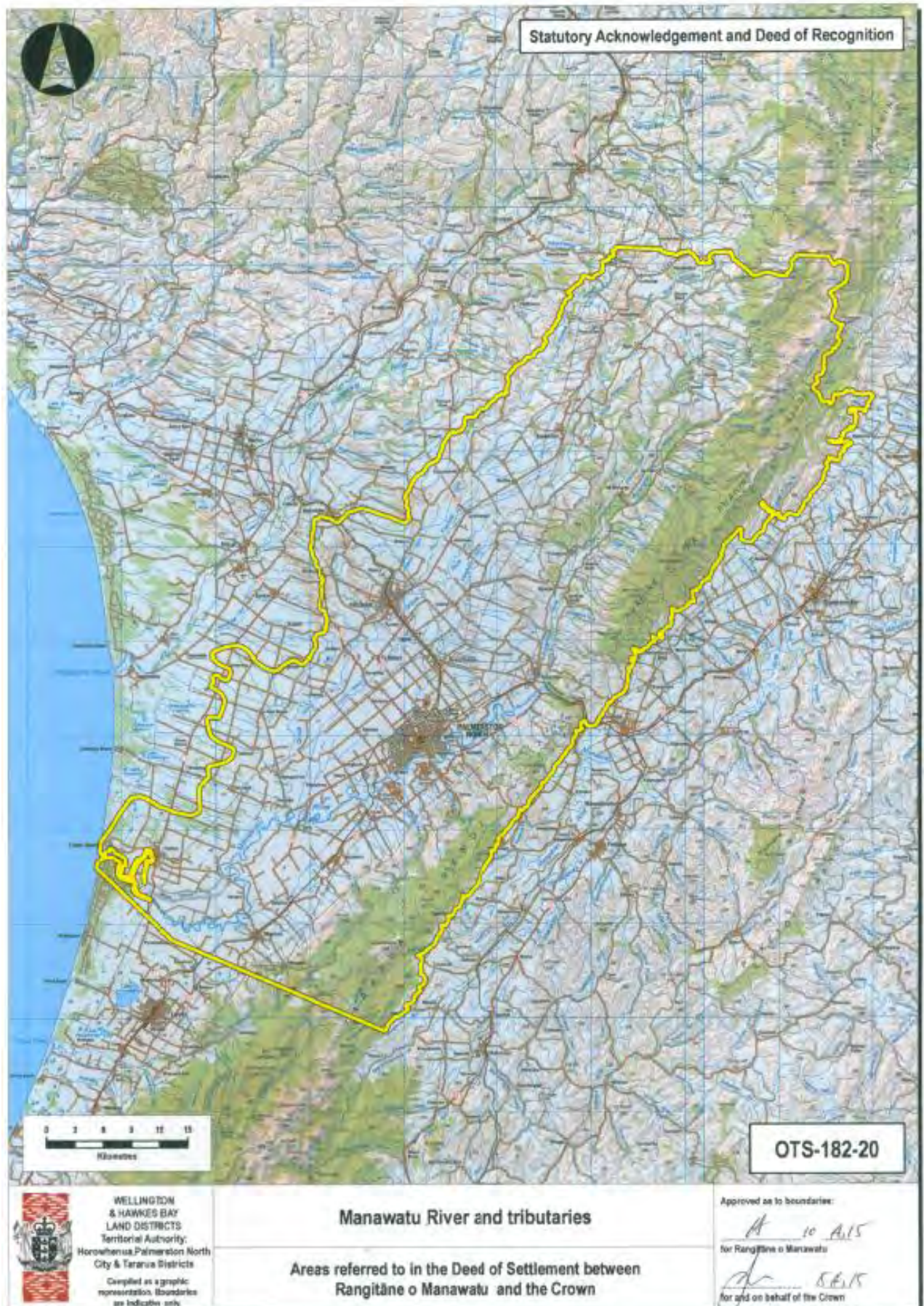
2 DEED PLANS





INITIALLED ATTACHMENTS SCHEDULE FOR PRESENTATION TO RANGITĀNE O MANAWATU FOR  
RATIFICATION PURPOSES

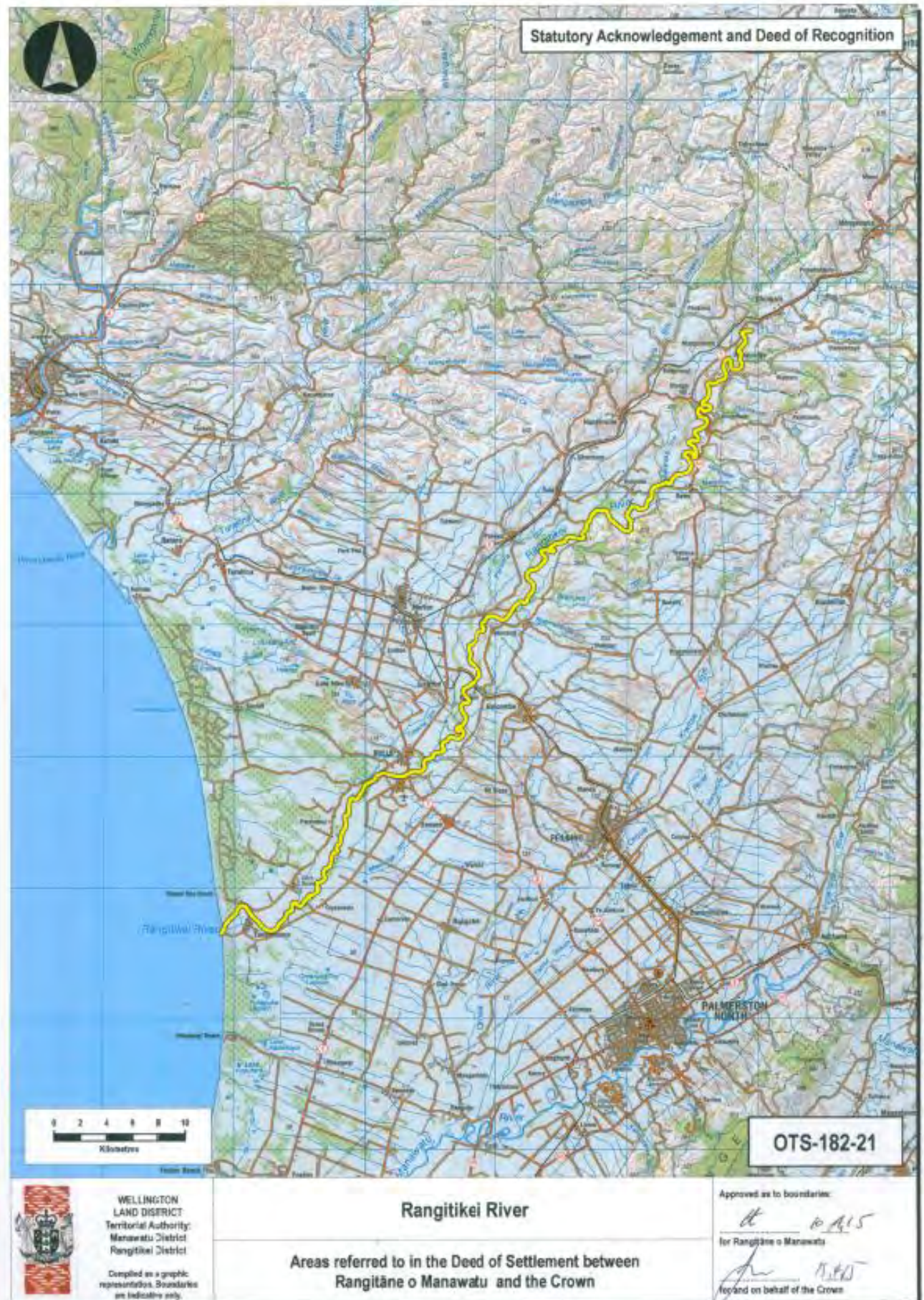
2 DEED PLANS





INITIALLED ATTACHMENTS SCHEDULE FOR PRESENTATION TO RANGITĀNE O MANAWATU FOR  
RATIFICATION PURPOSES

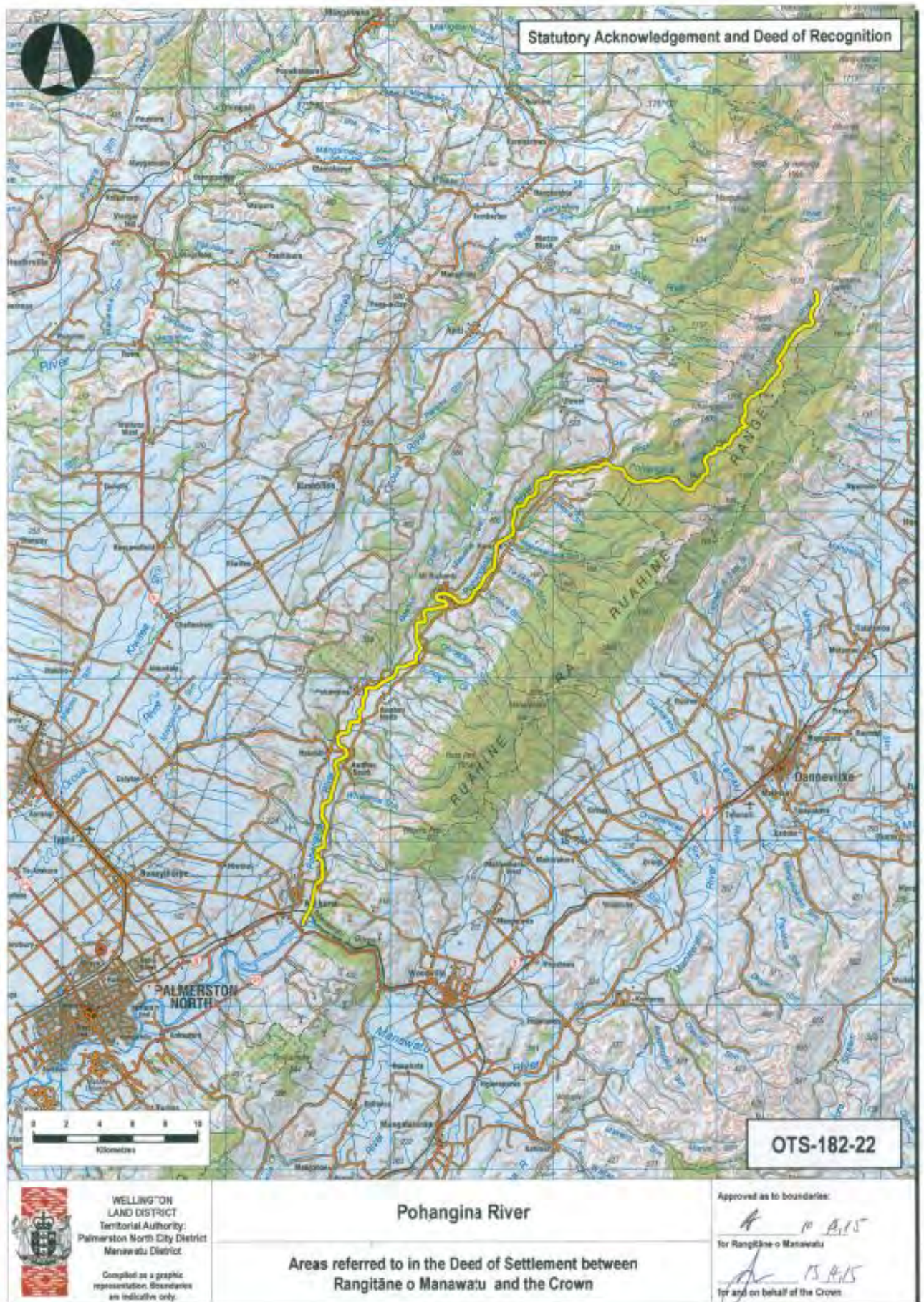
2 DEED PLANS





INITIALLED ATTACHMENTS SCHEDULE FOR PRESENTATION TO RANGITĀNE O MANAWATU FOR  
RATIFICATION PURPOSES

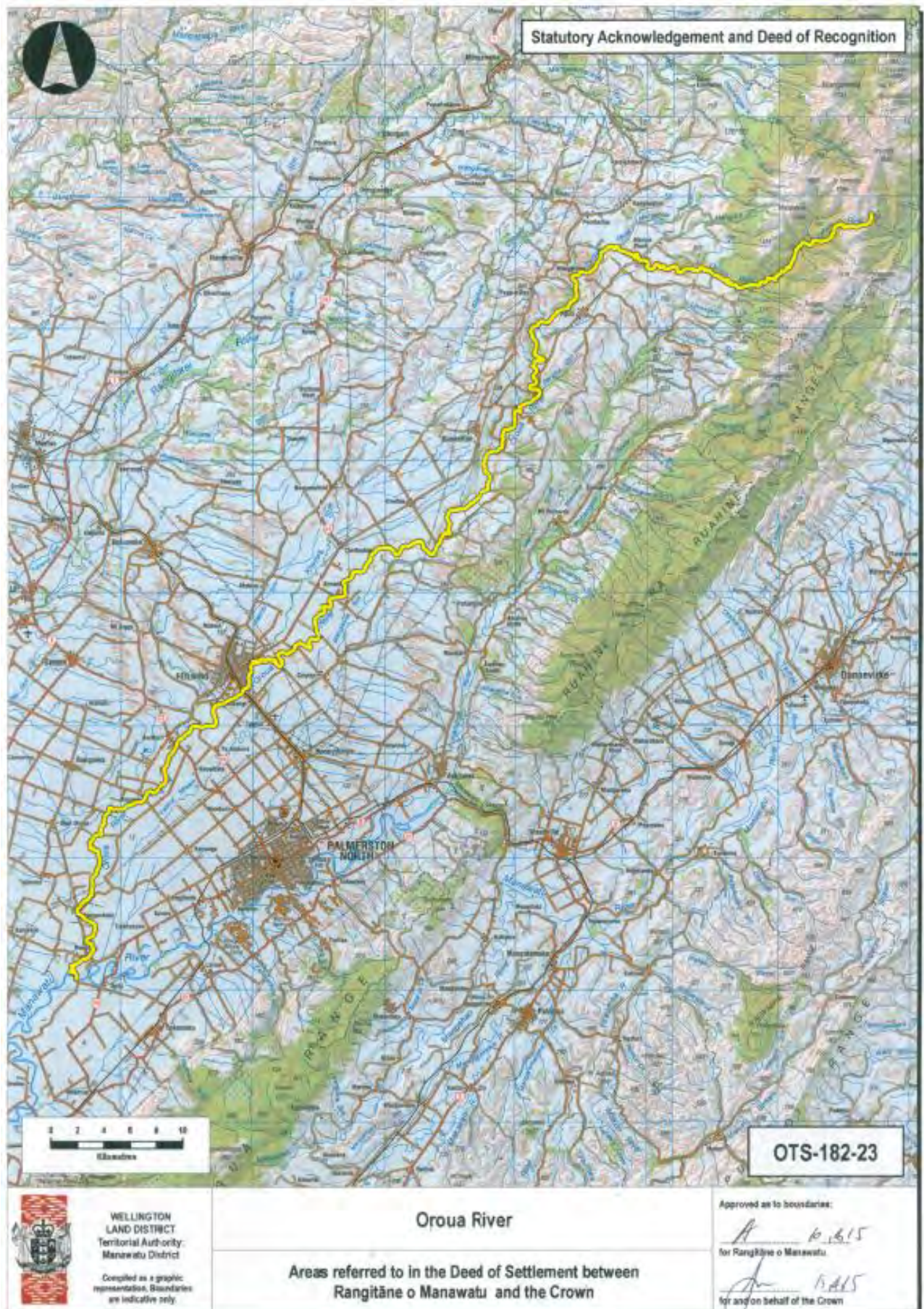
2 DEED PLANS





INITIALLED ATTACHMENTS SCHEDULE FOR PRESENTATION TO RANGITĀNE O MANAWATU FOR  
RATIFICATION PURPOSES

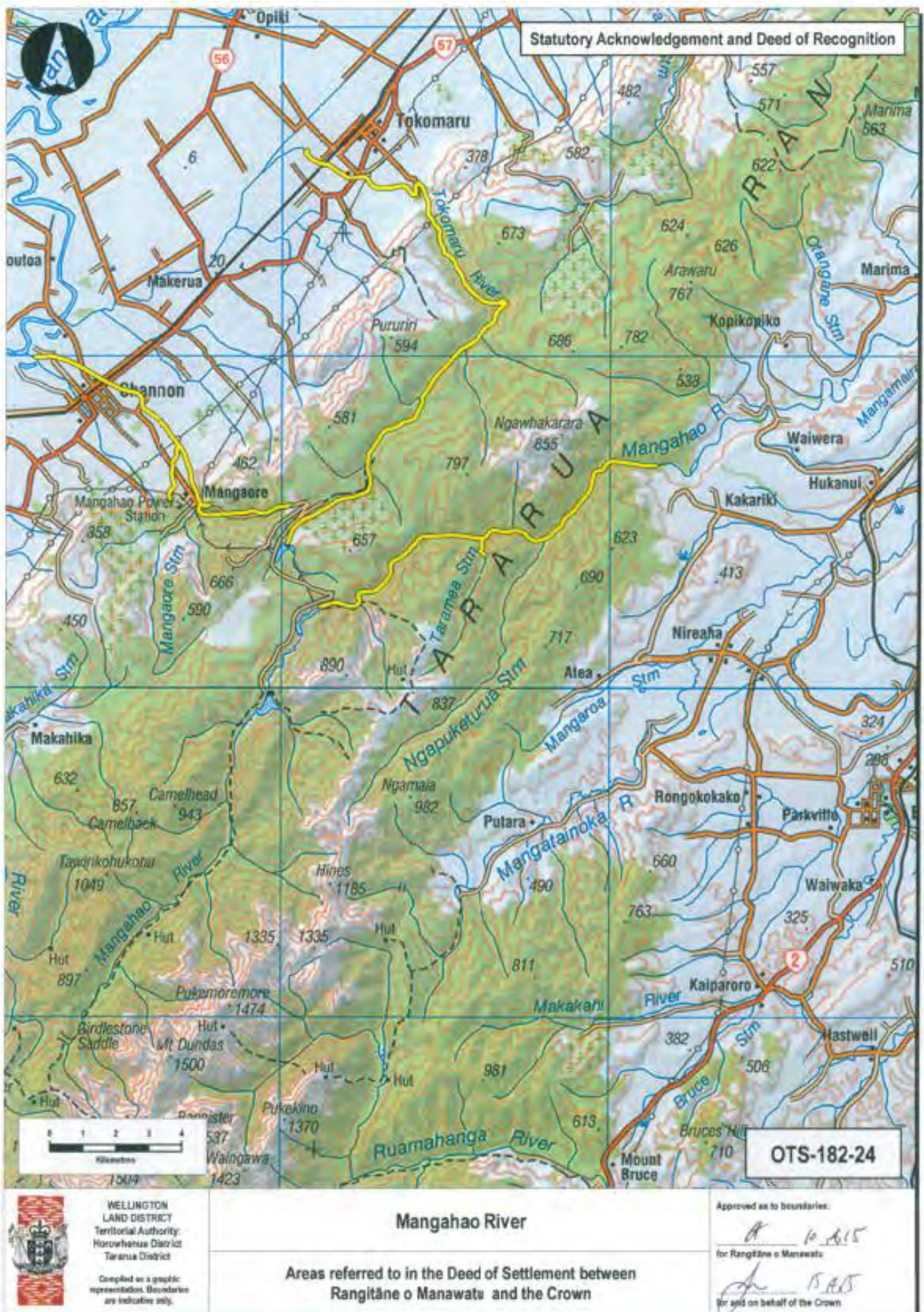
2 DEED PLANS





INITIALLED ATTACHMENTS SCHEDULE FOR PRESENTATION TO RANGITĀNE O MANAWATU FOR  
RATIFICATION PURPOSES

2 DEED PLANS





INITIALLED ATTACHMENTS SCHEDULE FOR PRESENTATION TO RANGITĀNE O MANAWATU FOR  
RATIFICATION PURPOSES

2 DEED PLANS





INITIALLED ATTACHMENTS SCHEDULE FOR PRESENTATION TO RANGITĀNE O MANAWATU FOR  
RATIFICATION PURPOSES

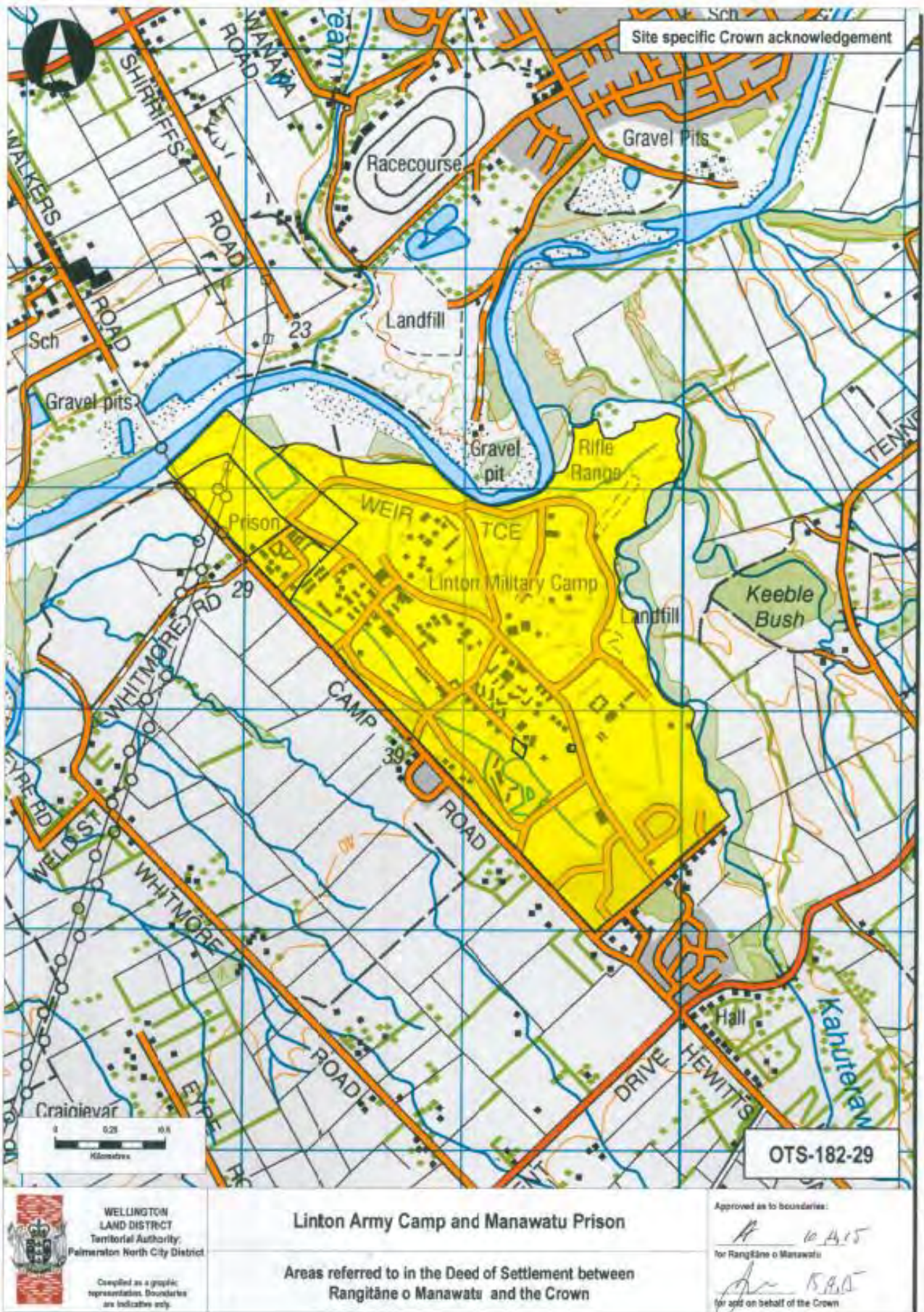
2 DEED PLANS





INITIALLED ATTACHMENTS SCHEDULE FOR PRESENTATION TO RANGITĀNE O MANAWATU FOR  
RATIFICATION PURPOSES

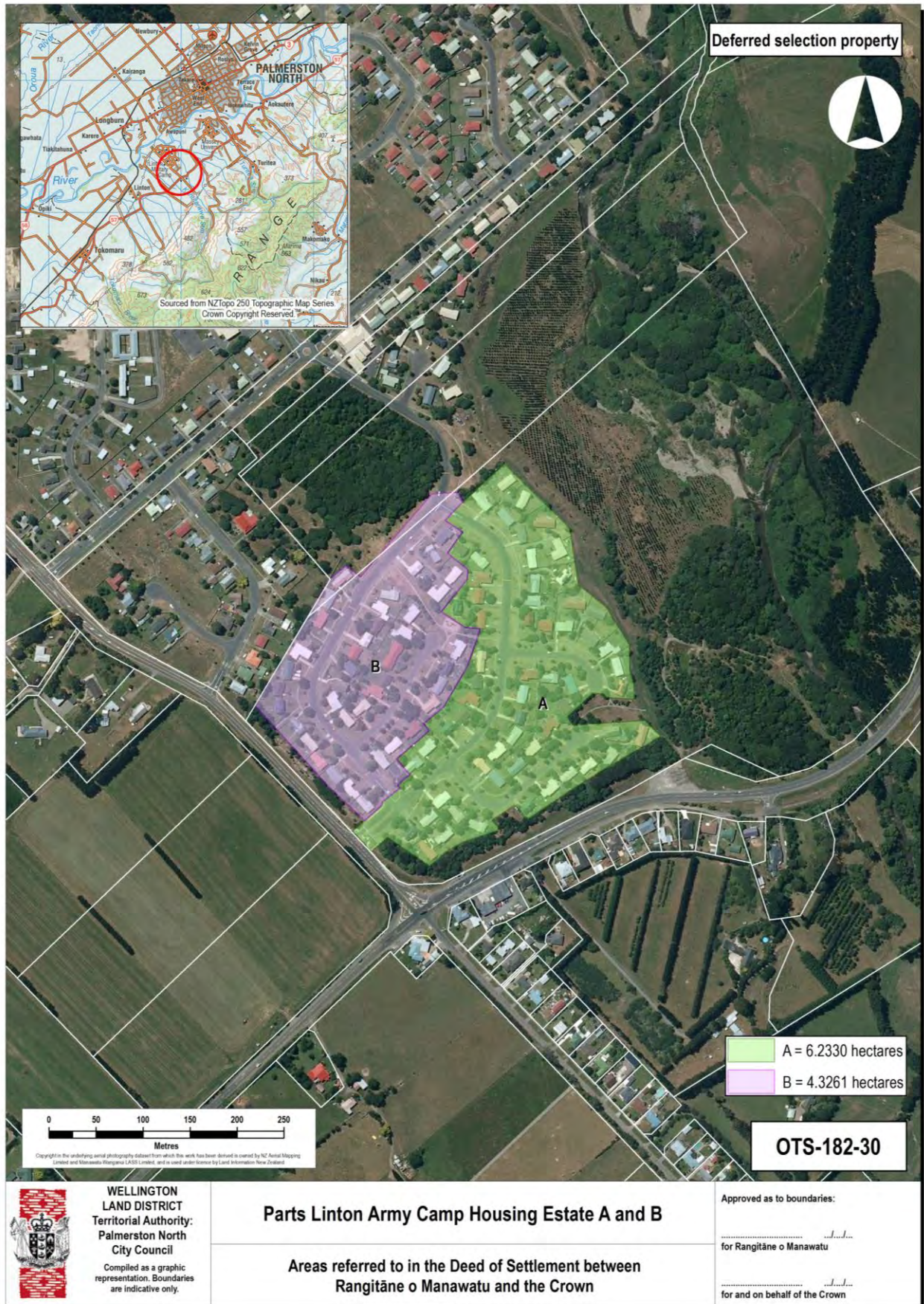
2 DEED PLANS





# INITIALLED ATTACHMENTS SCHEDULE FOR PRESENTATION TO RANGITĀNE O MANAWATU FOR RATIFICATION PURPOSES

## 2 DEED PLANS





**INITIALLED ATTACHMENTS SCHEDULE FOR PRESENTATION TO RANGITĀNE O MANAWATU FOR  
RATIFICATION PURPOSES**

---

### 3 RFR LAND

<b>Property Name / Address</b>	<b>Legal Description All Wellington Land District</b>	<b>Land holding Agency</b>
Manawatu Prison	11.2127 hectares, more or less, being Section 1 SO 37908. All Computer Freehold Register WN52D/696.  6.2087 hectares, more or less, being Part Kairanga 2 . All Computer Freehold Register WN43B/460.	Department of Corrections
Linton Army Camp	267.611 hectares, approximately, being Part Kairanga 2 and A, Parts Kairanga B, Sections 416 and 432, Part Sections 2 and 3 and Parts Sections 167 and 168 Town of Fitzherbert and Parts Old Stream Bed. Balance Gazette Notice K25892. Subject to survey.  10.6 hectares, approximately, being part Kairanga C and Part Section 172 Town of Fitzherbert. Part Computer freehold register 567436. Subject to survey.  12.3573 hectares, approximately, being Part Section 437 Town of Fitzherbert. Balance Gazette Notice 694001.1. Subject to survey	New Zealand Defence Force
Palmerston North Courthouse	0.4444 hectares, more or less, being Section 1 SO 37467. All Computer Freehold Register WN46C/871.	Ministry of Justice
Palmerston North Girls High School (part Crown-owned portions only)	2.4281 hectares, more or less, being Lots 5, 6 and 7 and Part Lot 11 DP 545. All Computer Freehold Register WN523/75.  0.8557 hectares, more or less, being Lot 1 DP 304043. All Computer Freehold Register 16254.  0.1214 hectares, more or less, being Lot 1 DP 11820. All Gazette Notice 556433.  0.1214 hectares, more or less, being Lot 2 DP 11820. All Gazette Notice 703640.	Ministry of Education



**INITIALLED ATTACHMENTS SCHEDULE FOR PRESENTATION TO RANGITĀNE O MANAWATU FOR  
RATIFICATION PURPOSES**

**3 RFR LAND**

<b>Property Name / Address</b>	<b>Legal Description All Wellington Land District</b>	<b>Land holding Agency</b>
Queen Elizabeth College	5.2085 hectares, more or less, being Part Suburban Sections 228, and 229 and Parts Suburban Section 236 Town of Palmerston North. Balance Computer Freehold Register WN604/288.  3.3133 hectares, more or less, being Part Suburban Sections 230 and 235 Town of Palmerston North and Lots 5, 6, 7, 8 and Part Lot 4 DP 10561. Balance Proclamation 3940.	Ministry of Education
Palmerston North Dog Base	0.0969 hectares, more or less, being Lot 319 DP 72162. All Computer Freehold Register WN38B/927.	Police
Palmerston North Police Station	0.0516 hectares, more or less, being Part Sections 860 and 862 Town of Palmerston North. All Computer Freehold Register WN113/206.  0.0516 hectares, more or less, being Part Section 860 Town of Palmerston North. All Computer Freehold Register WN119/297.  0.2806 hectares, more or less, being Lot 2 DP 88946. All Computer Freehold Register WN56C/203.	Police
Palmerston North Highbury Avenue CPC	0.0760 hectares, more or less, Lot 3 DP 24699. All Computer Freehold Register WN22B/914.	Police
Makerua Swamp Wildlife Management Reserve	42.2957 hectares, more or less, being Section 24 Block VIII Mount Robinson SD. All Gazette Notice 792823.	Department of Conservation
Awatapu College	7.7193 hectares, more or less, being Part Lot 2 DP 335215. All Computer Freehold Register 144273.  0.1298 hectares, more or less, being Lot 1 DP 31020. All Gazette Notice 459068.1.  0.0318 hectares, more or less, being Lot 16 DP 45502. All Gazette Notice 312402.1.  0.0025 hectares, more or less, being Lot 1 DP 47565. All Computer Freehold Register WN18B/148.	Ministry of Education



**INITIALLED ATTACHMENTS SCHEDULE FOR PRESENTATION TO RANGITĀNE O MANAWATU FOR  
RATIFICATION PURPOSES**

**3 RFR LAND**

<b>Property Name / Address</b>	<b>Legal Description All Wellington Land District</b>	<b>Land holding Agency</b>
40 Ferguson Street, Palmerston North  PF 1251	0.2652 hectares, more or less, being Lot 11 DP 23122. All transfer B810769.2.	Office of Treaty Settlements
Ashford Avenue/ 11 Stirling Crescent, Palmerston North  PF 1392	2.3126 hectares, more or less, being Part Lots 115, 116 and 117 and Parts Lot 118 DP 791. All Computer Freehold Register 17631.  0.0775 hectares, more or less, being Lot 8 DP 15989. All Computer Freehold Register 17632.	Office of Treaty Settlements
27 Manapouri Crescent, Palmerston North  PF 506	0.0863 hectares, more or less, being Lot 8 DP 9514. All Computer Freehold Register WN44A/601.	Office of Treaty Settlements
70 Albert Street, Palmerston North  PF 462	0.1214 hectares, more or less, being Part Section 151 Town of Palmerston North. All transfer 6972152.3.	Office of Treaty Settlements
20 David Street, Palmerston North  PF 1370	0.0405 hectares, more or less, being Lot 35 DP 26. All Computer Freehold Register WN42D/996.  0.0405 hectares, more or less, being Lot 36 DP 26. All Computer Freehold Register WN42D/997.	Office of Treaty Settlements
Takapari Conservation Area	1.9936 hectares, approximately, being Part Section 44 Block XVI Apiti Survey District. Part Gazette 1960 page 1051. Subject to survey.	Department of Conservation
Pohangina Field Centre	0.6300 hectares, approximately, being Part Section 39 Block X Umutoi Survey District. Part Gazette 1983 page 2750. Subject to survey.	Department of Conservation



## **4 DRAFT SETTLEMENT BILL**