

**NGĀI TAI KI TĀMAKI**  
**and**  
**THE TRUSTEES OF NGĀI TAI KI TĀMAKI TRUST**  
**and**  
**THE CROWN**

---

**DEED OF SETTLEMENT:**  
**ATTACHMENTS**

---

ATTACHMENTS

---

TABLE OF CONTENTS

1 AREA OF INTEREST ..... 1

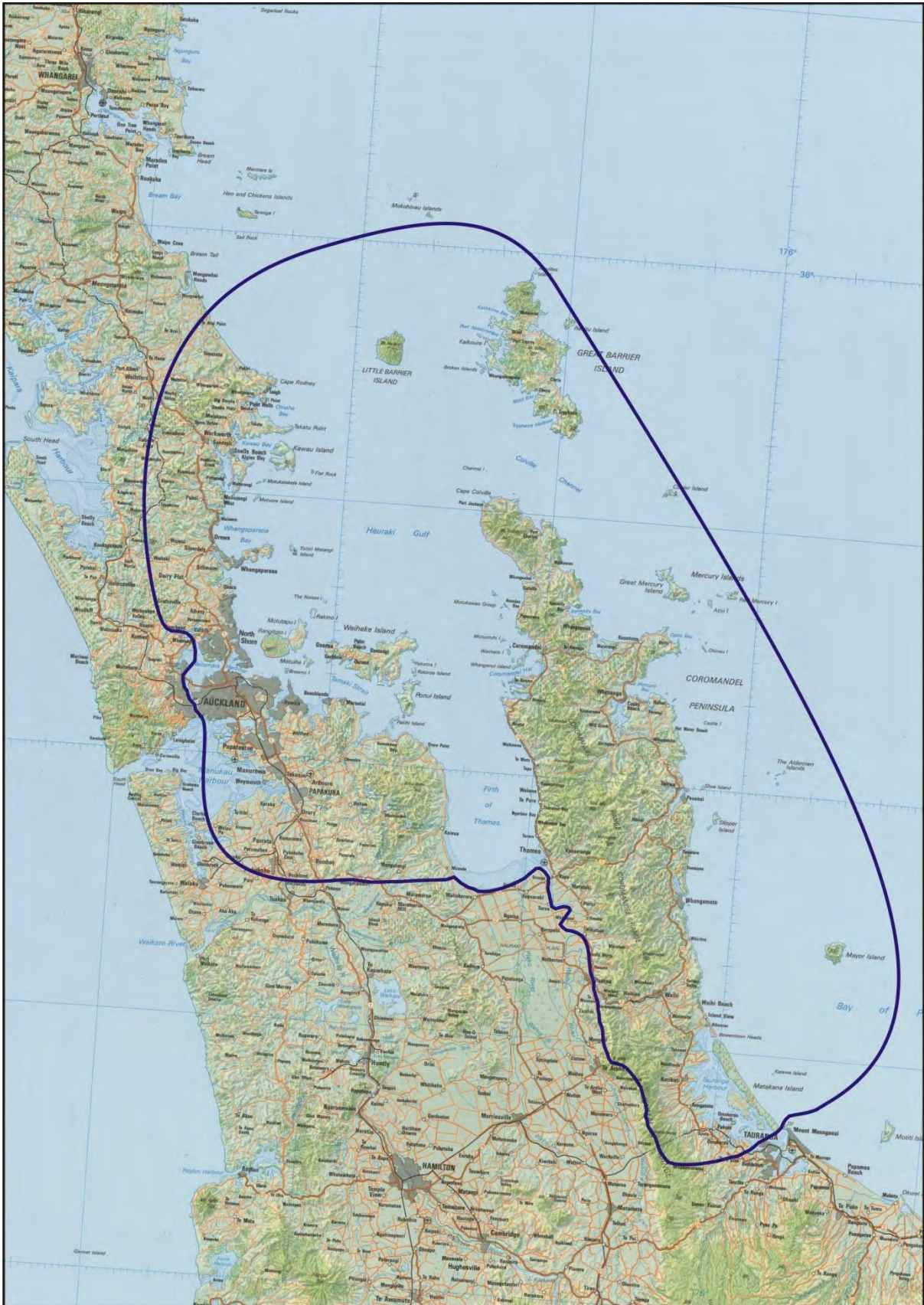
2 DEED PLANS ..... 3

3 DRAFT SETTLEMENT BILL ..... 34

## 1 AREA OF INTEREST

# ATTACHMENTS

## 1 AREA OF INTEREST





**2 DEED PLANS**

## ATTACHMENTS

---

### 2: DEED PLANS

#### Statutory areas

- Coastal Marine Area (OTS-403-128)
- Kiripaka Wildlife Scenic Reserve (OTS-403-129)
- Mataitai Forest Conservation Area (OTS-403-115)
- Mātaitai Scenic Reserve (OTS-403-115)
- Motutapu Island Recreation Reserve (OTS-403-130)
- Motuihe Island Recreation Reserve (OTS-403-125)
- Mutukaroa / Hamlin Hill (OTS-403-124)
- Papa Turoa Scenic Reserve (OTS-403-119)
- Papepape Marginal Strip (OTS-403-122)
- Stony Batter Historic Reserve (OTS-403-120)
- Te Matuku Bay Scenic Reserve (OTS-403-121)
- Te Morehu Scenic Reserve (OTS-403-126)
- Turanga Creek Conservation Area (OTS-403-123)
- Wairoa Gorge Scenic Reserve (OTS-403-118)
- Wairoa River and tributaries (OTS-403-127)
- Whakatiri Scenic Reserve (OTS-403-115)

#### Cultural redress properties

- Hihiorapa Urupā (OTS-403-113)
- Hukunui (OTS-403-104)
- Hūnua Falls property (OTS-403-103)
- Mangemangeroa (OTS-403-101)
- Maungarei A (OTS-403-099)
- Motukaraka (OTS-403-111)
- Ororopupu (OTS-403-105)
- Tai Rawhiti (OTS-403-109)
- Te Matuku Ngāi Tai (OTS-403-110)
- Te Naupata (OTS-403-112)
- Te Rae-o-Kahu Pā (OTS-403-106)
- Te Tauroa (OTS-403-104)
- Te Waiarohia Pā (OTS-403-114)
- Te Wairoa (OTS -403-102)
- Totara (OTS-403-107)
- Waikopua (OTS-403-108)

ATTACHMENTS

2: DEED PLANS





ATTACHMENTS

2: DEED PLANS





ATTACHMENTS

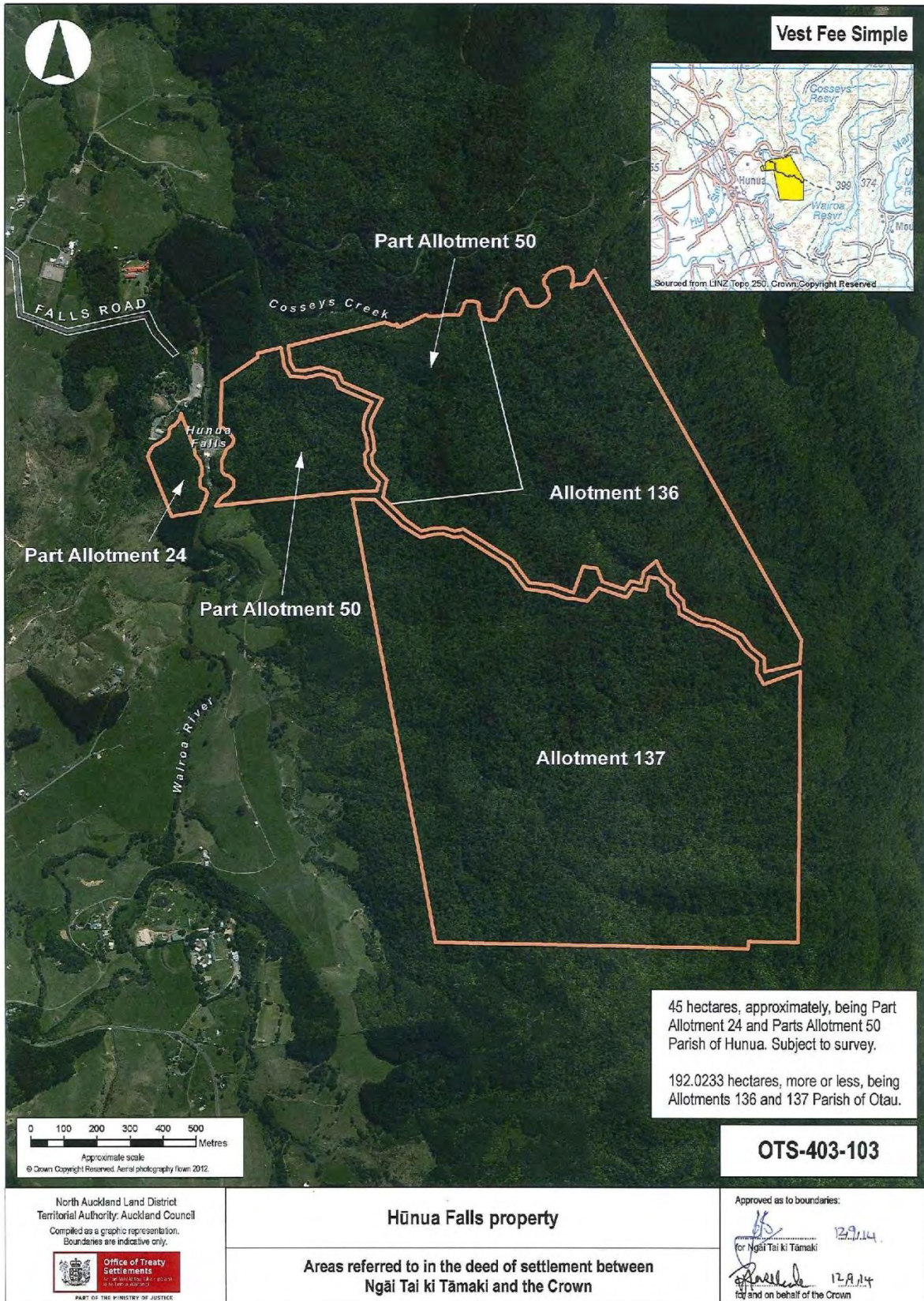
2: DEED PLANS





ATTACHMENTS

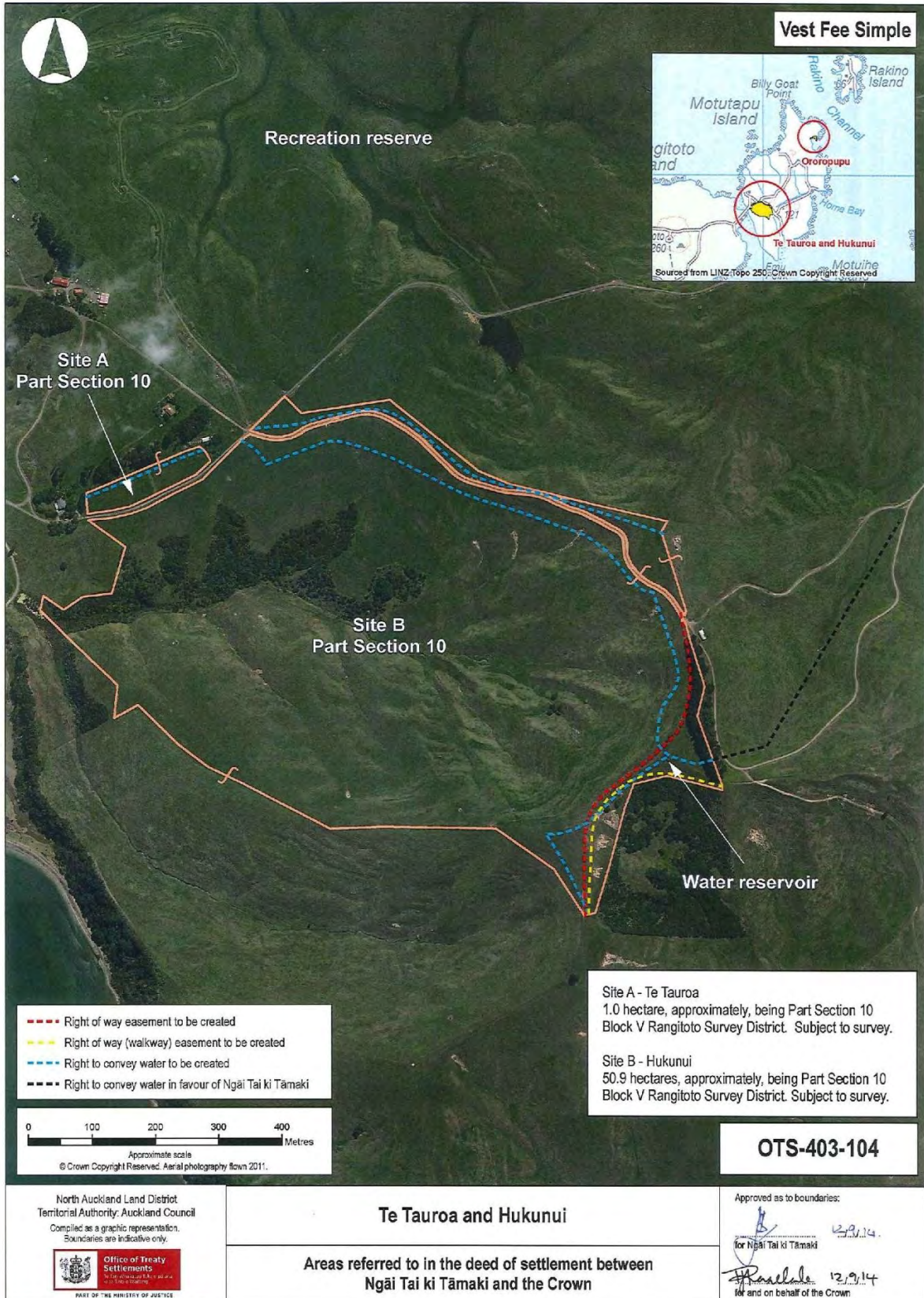
2: DEED PLANS





ATTACHMENTS

2: DEED PLANS





ATTACHMENTS

2: DEED PLANS





ATTACHMENTS

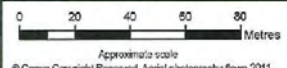
2: DEED PLANS



Vest Fee Simple



Recreation reserve



1.7 hectares, approximately, being Part Motuihe Island (SO 25853). Subject to survey.

**OTS-403-106**

North Auckland Land District  
Territorial Authority: Auckland Council  
Compiled as a graphic representation.  
Boundaries are indicative only.



PART OF THE MINISTRY OF JUSTICE

**Te Rae-o-Kahu Pā**

Areas referred to in the deed of settlement between  
Ngāi Tai ki Tāmaki and the Crown

Approved as to boundaries:

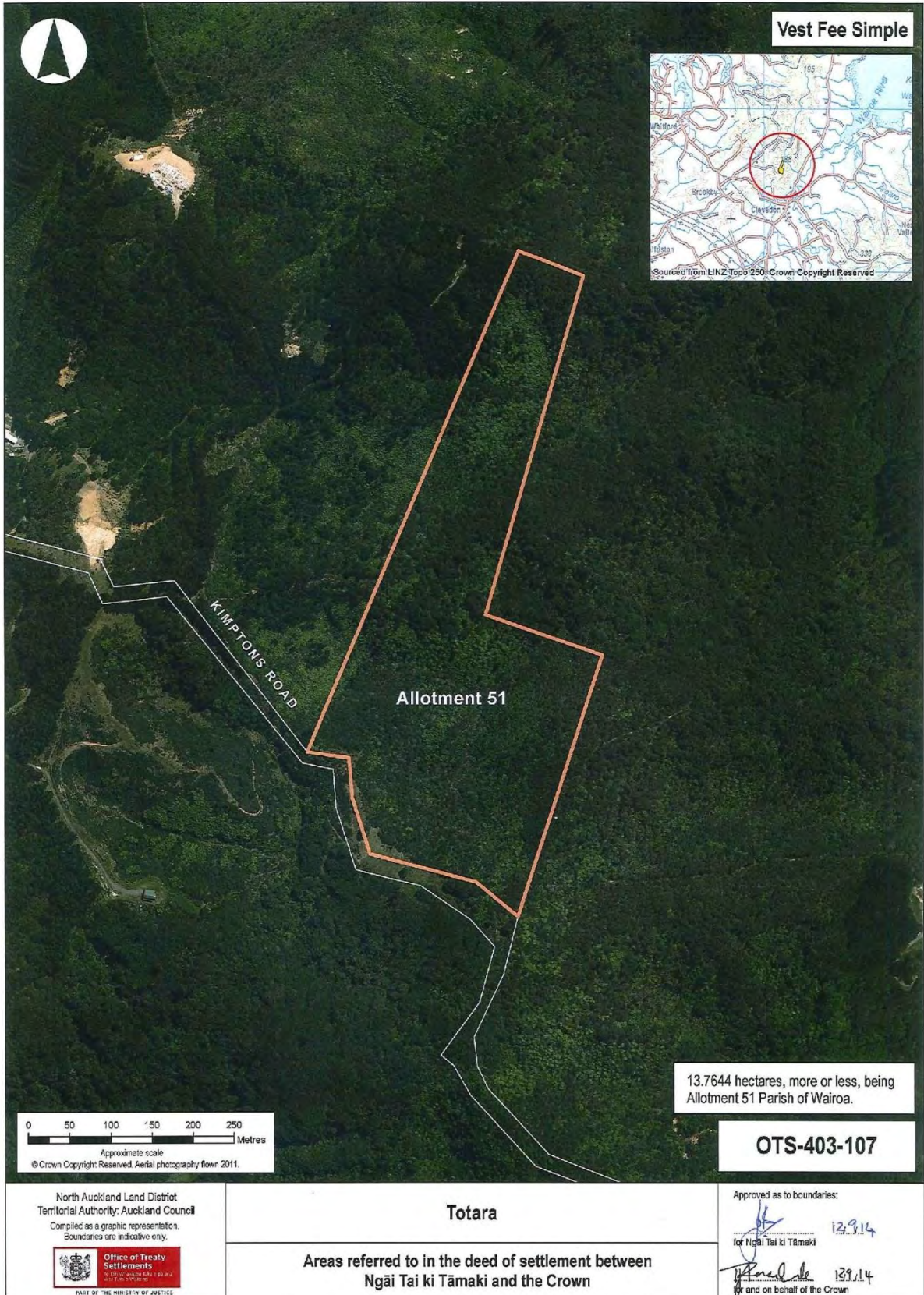
*[Signature]* 12/9/14  
for Ngāi Tai ki Tāmaki

*[Signature]* 12/9/14  
Iotuna on behalf of the Crown



ATTACHMENTS

2: DEED PLANS



0 50 100 150 200 250  
Metres  
Approximate scale  
© Crown Copyright Reserved. Aerial photography flown 2011.

13.7644 hectares, more or less, being  
Allotment 51 Parish of Wairoa.

**OTS-403-107**


North Auckland Land District  
Territorial Authority: Auckland Council  
Compiled as a graphic representation.  
Boundaries are indicative only.

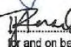
  
Office of Treaty Settlements  
PART OF THE MINISTRY OF JUSTICE

**Totara**

**Areas referred to in the deed of settlement between  
Ngāi Tai ki Tāmaki and the Crown**

Approved as to boundaries:

 13.9.14  
for Ngāi Tai ki Tāmaki

 13.9.14  
for and on behalf of the Crown



ATTACHMENTS

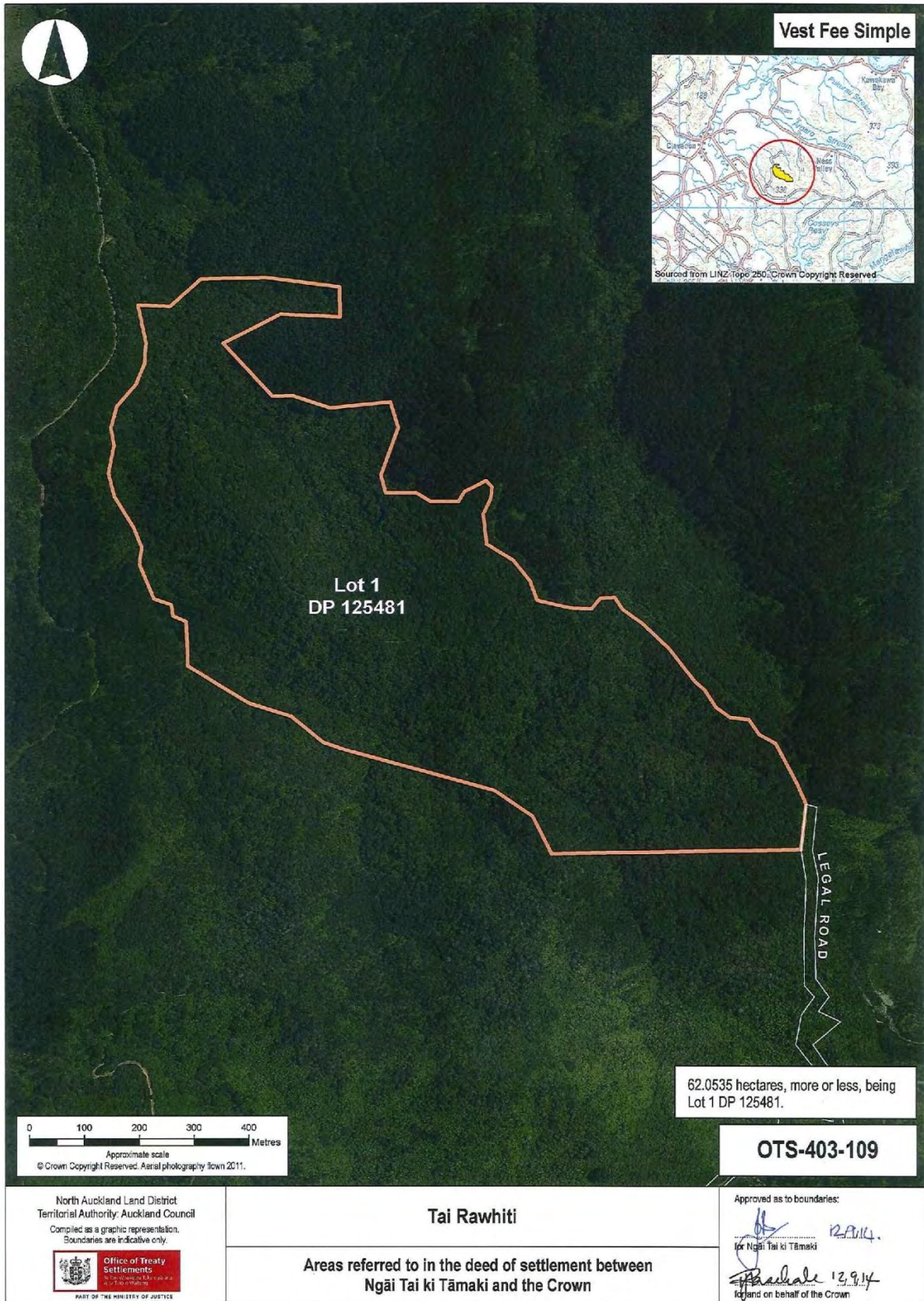
2: DEED PLANS





ATTACHMENTS

2: DEED PLANS









ATTACHMENTS

2: DEED PLANS





ATTACHMENTS

2: DEED PLANS





ATTACHMENTS

2: DEED PLANS





ATTACHMENTS

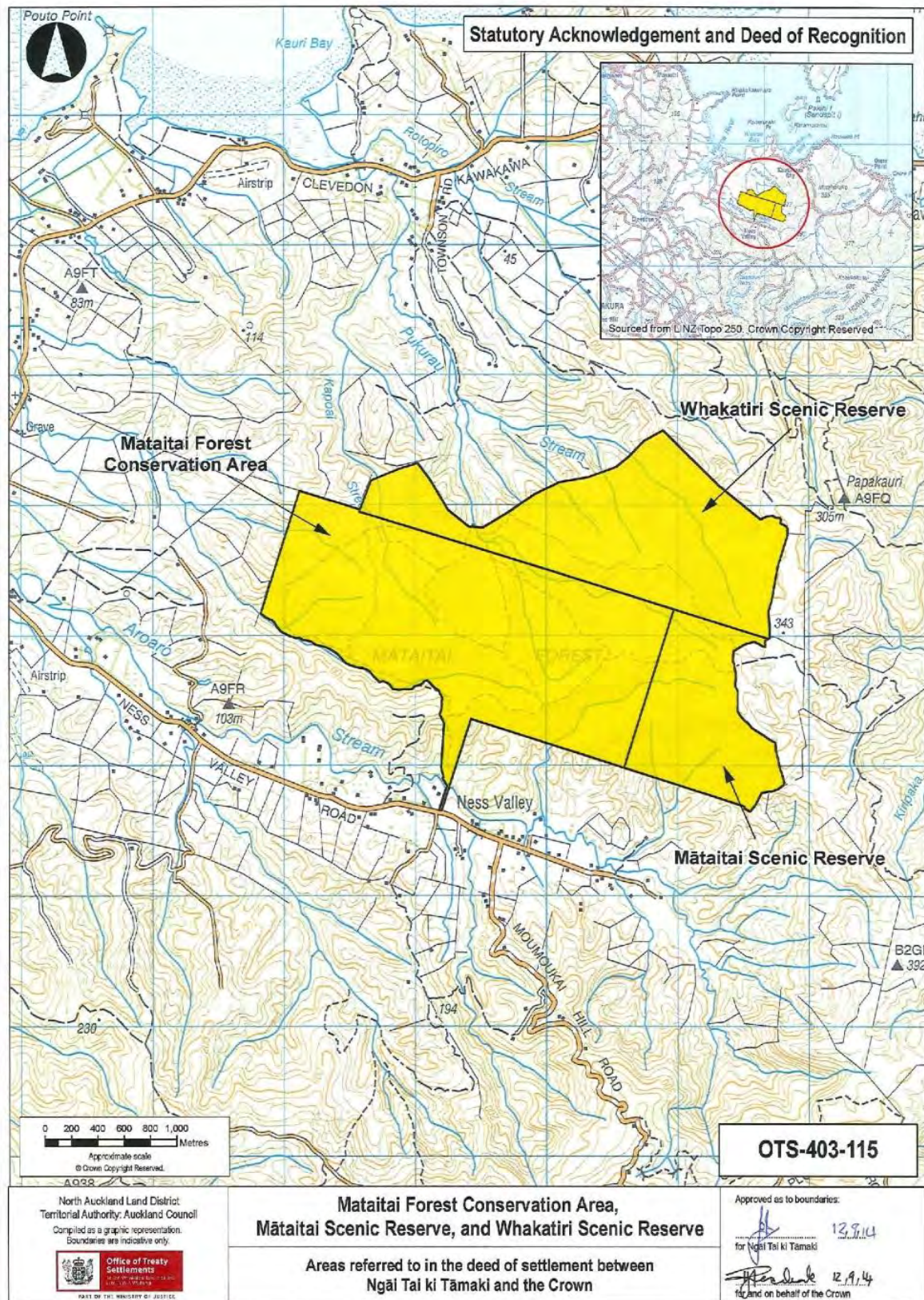
2: DEED PLANS





ATTACHMENTS

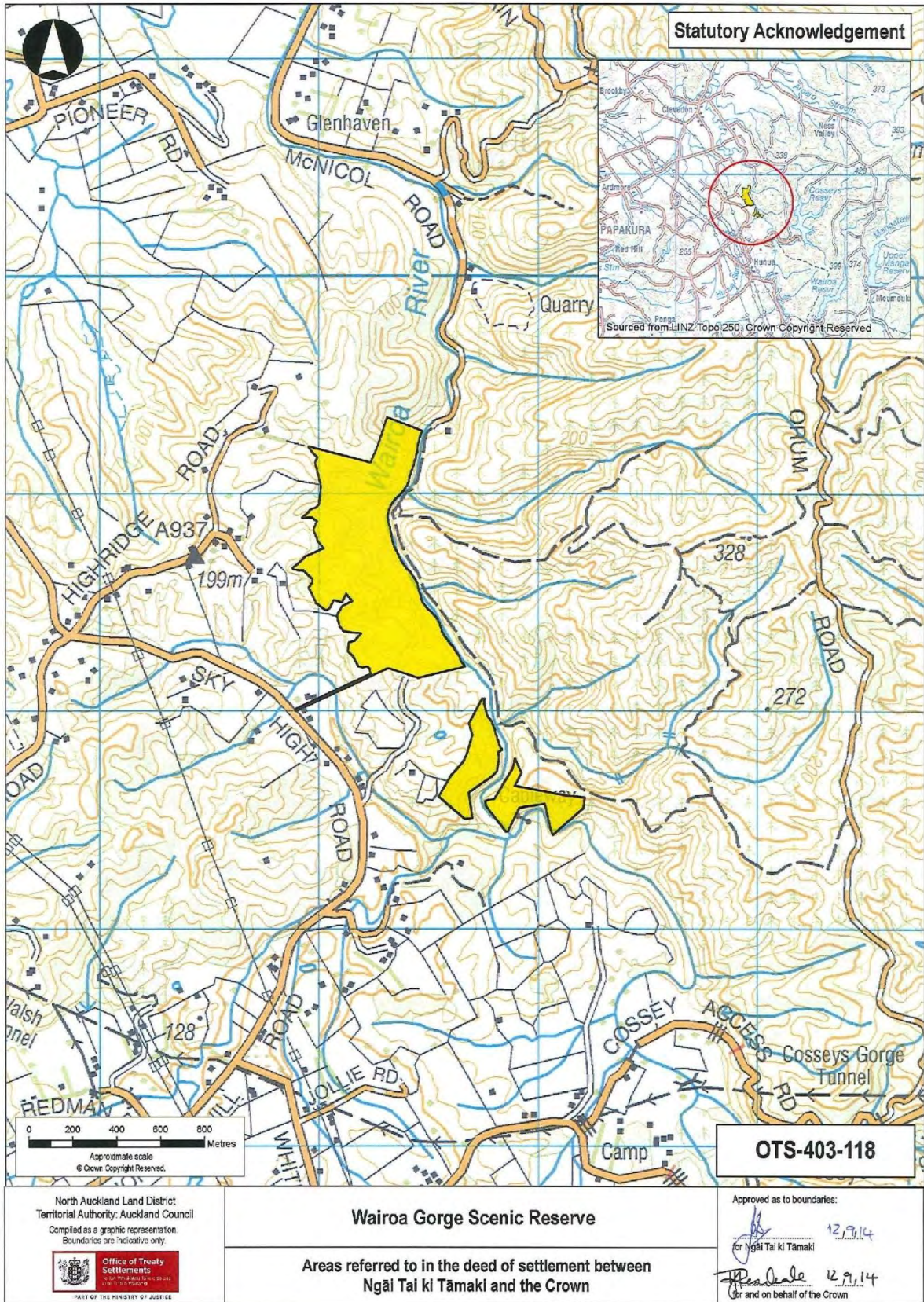
2: DEED PLANS





ATTACHMENTS

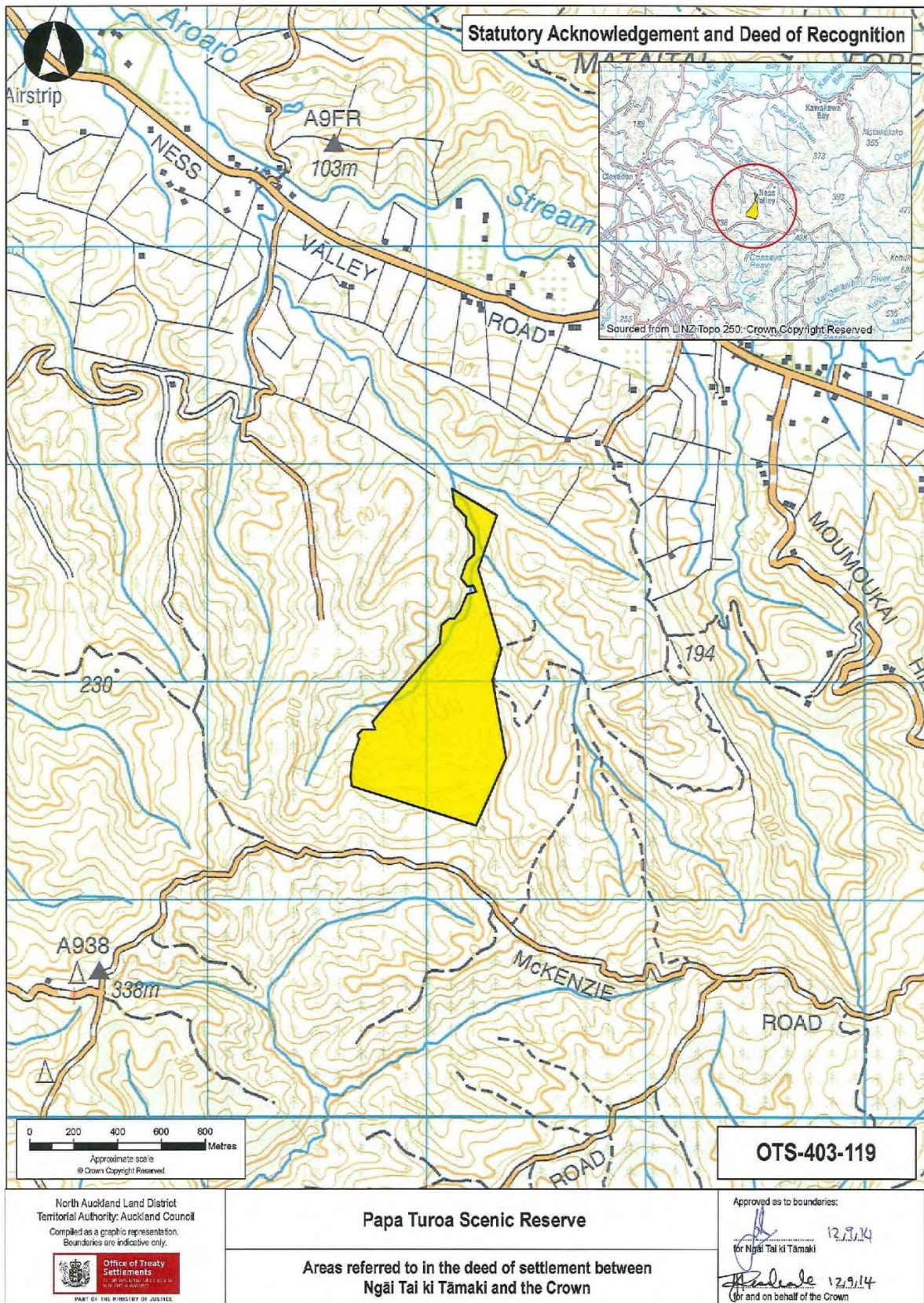
2: DEED PLANS





ATTACHMENTS

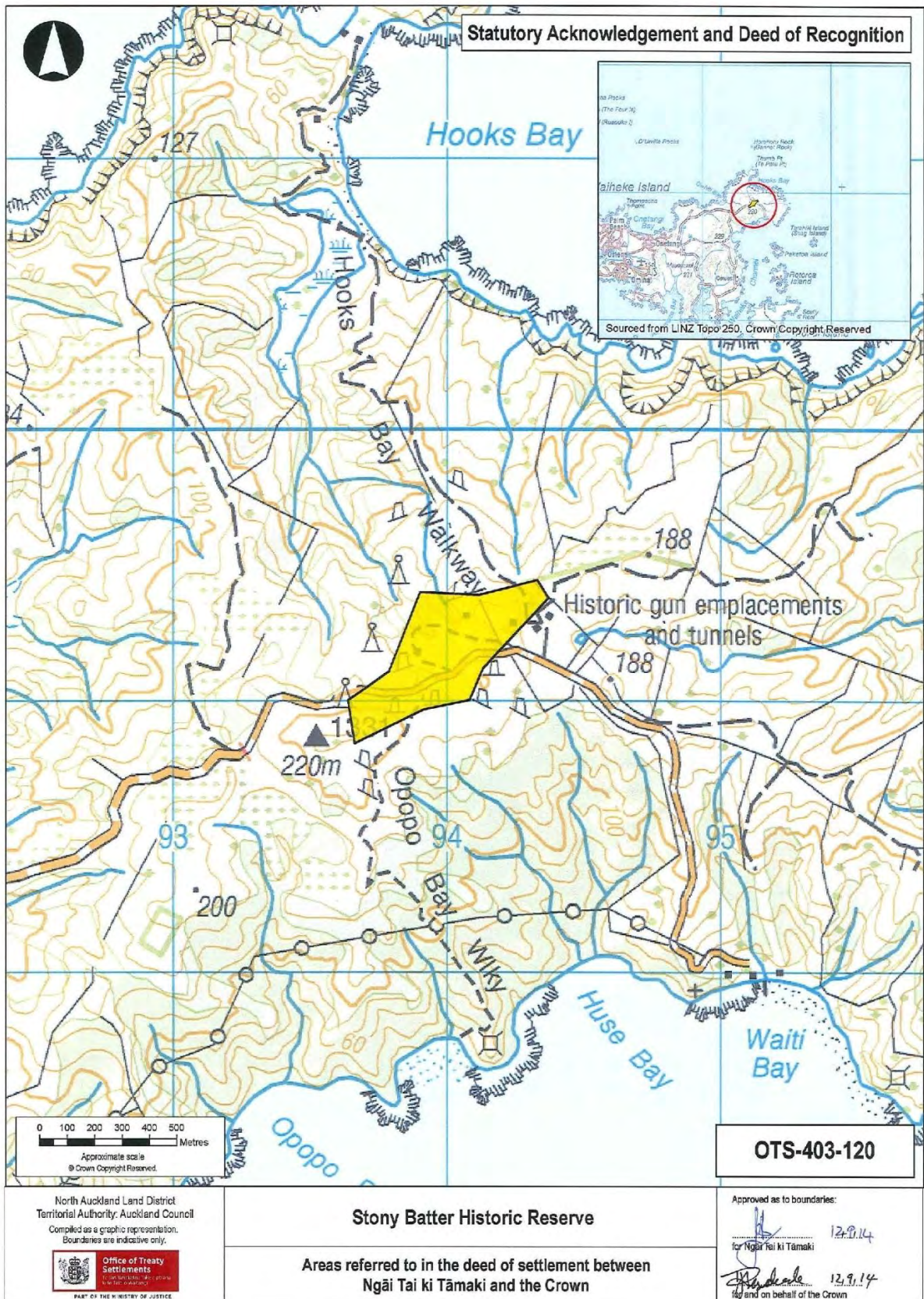
2: DEED PLANS





ATTACHMENTS

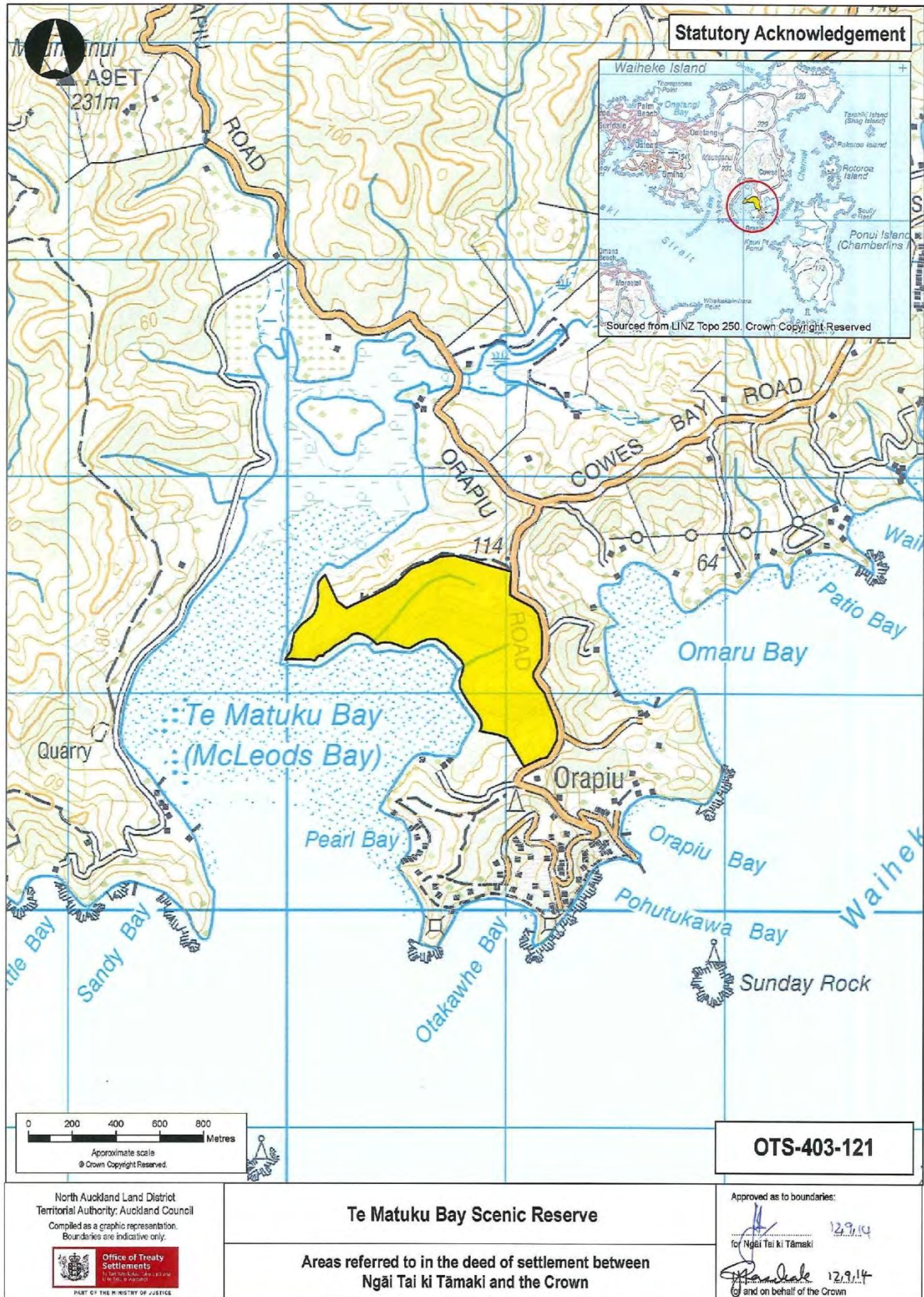
2: DEED PLANS





ATTACHMENTS

2: DEED PLANS





ATTACHMENTS

2: DEED PLANS





ATTACHMENTS

2: DEED PLANS



North Auckland Land District  
 Territorial Authority: Auckland Council  
 Compiled as a graphic representation.  
 Boundaries are indicative only.



**Turanga Creek Conservation Area**

Areas referred to in the deed of settlement between  
 Ngāi Tai ki Tāmaki and the Crown

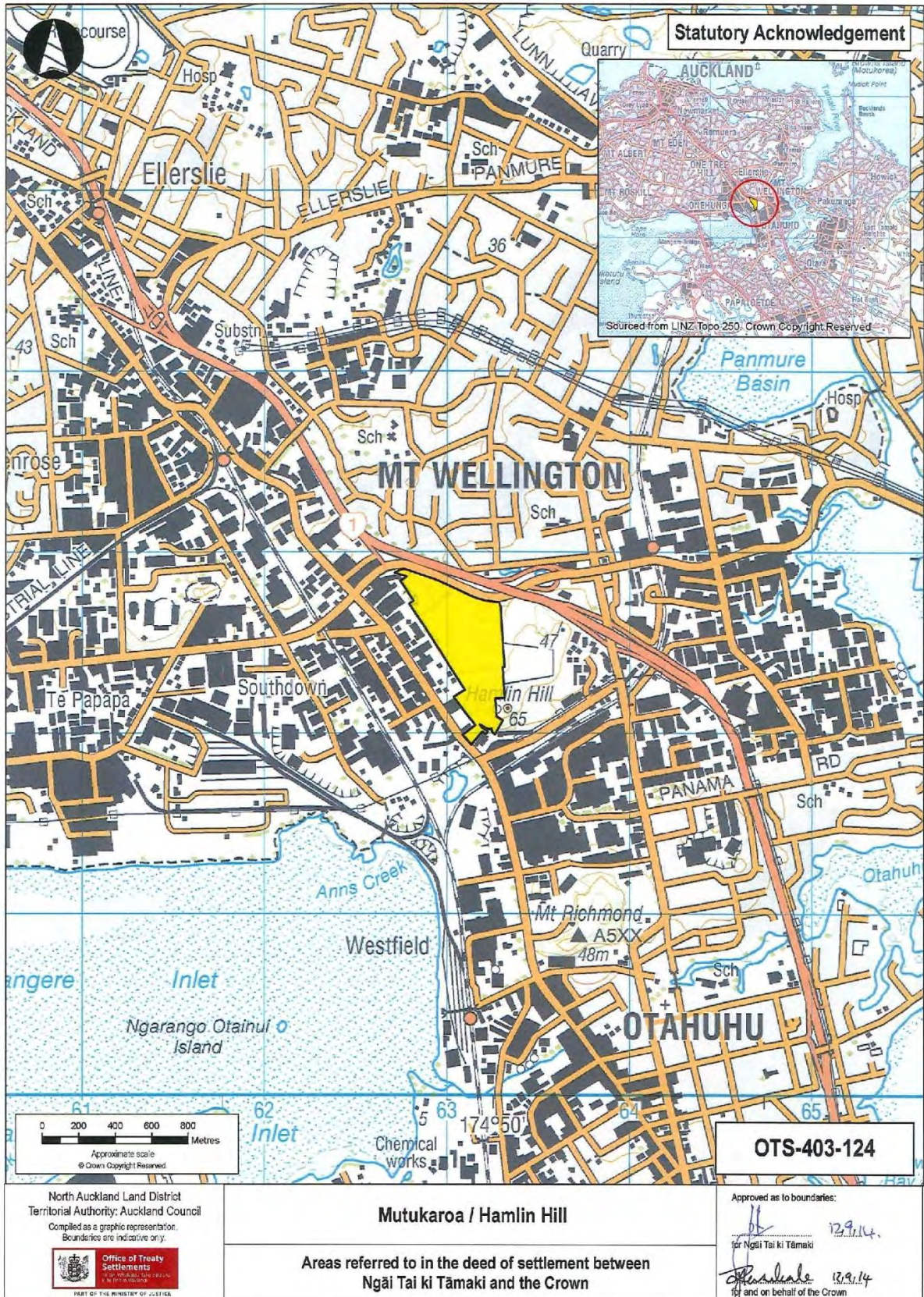
Approved as to boundaries:  
 [Signature] 13.9.14  
 for Ngāi Tai ki Tāmaki  
 [Signature] 13.9.14  
 for and on behalf of the Crown

**OTS-403-123**



ATTACHMENTS

2: DEED PLANS





ATTACHMENTS

2: DEED PLANS



North Auckland Land District  
 Territorial Authority: Auckland Council  
 Compiled as a graphic representation.  
 Boundaries are indicative only.



PART OF THE MINISTRY OF JUSTICE

**Motuihe Island Recreation Reserve**

Areas referred to in the deed of settlement between  
 Ngāi Tai ki Tāmaki and the Crown

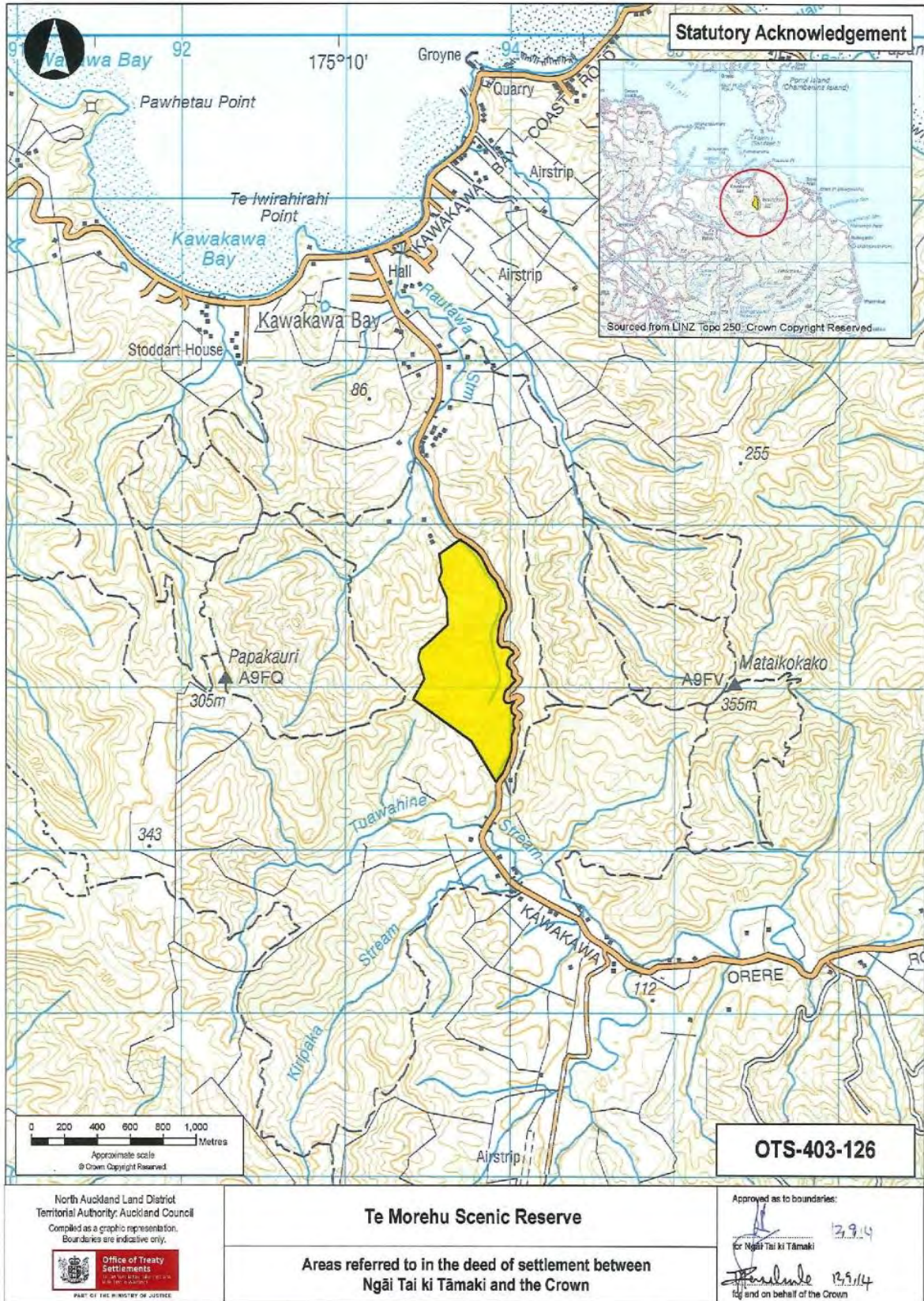
Approved as to boundaries:

*[Signature]* 12.9.14  
 for Ngāi Tai ki Tāmaki

*[Signature]* 12.9.14  
 for and on behalf of the Crown



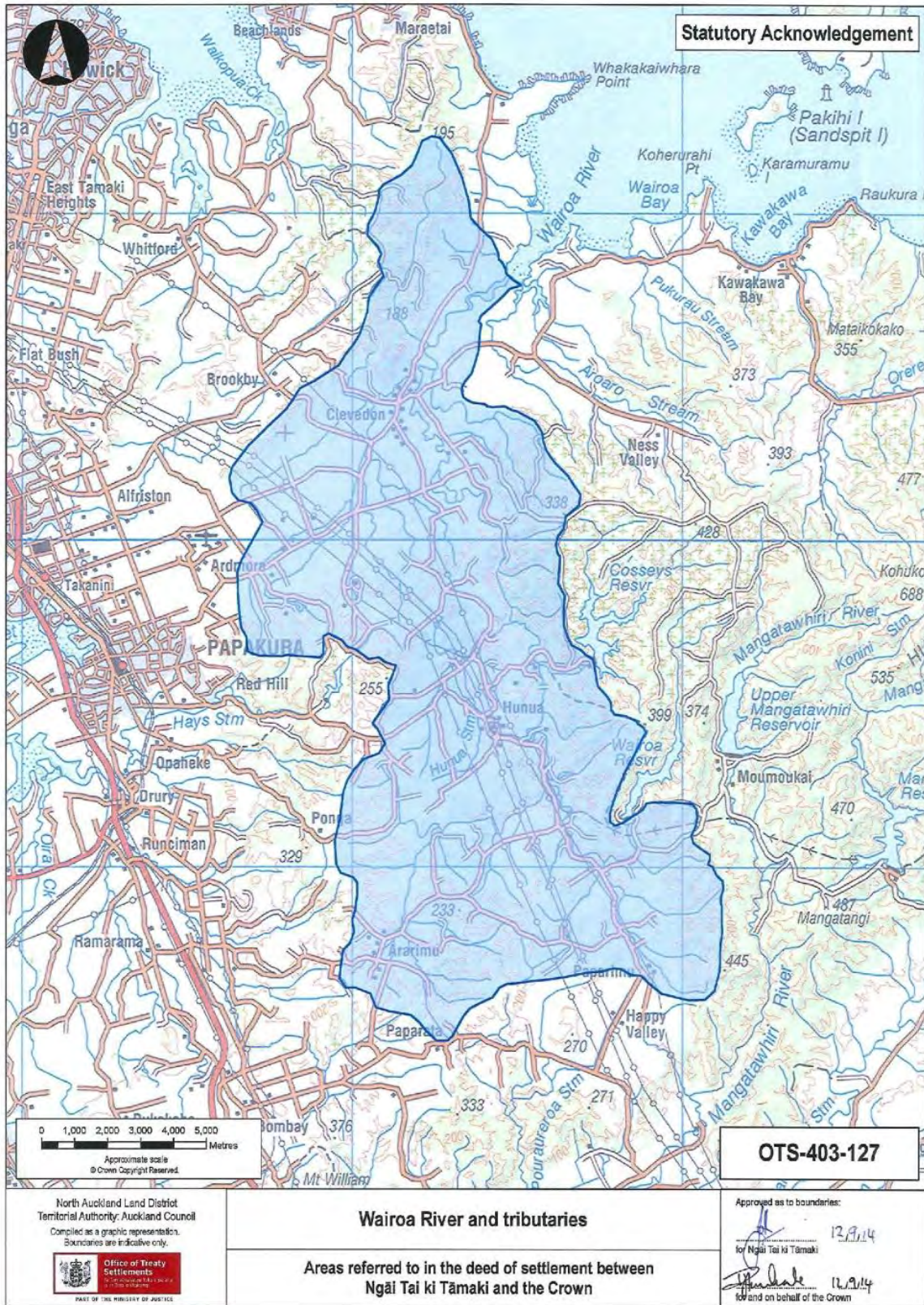
ATTACHMENTS





ATTACHMENTS

2: DEED PLANS



North Auckland Land District  
 Territorial Authority: Auckland Council  
 Compiled as a graphic representation.  
 Boundaries are indicative only.



OFFICE OF TREATY SETTLEMENTS  
 PART OF THE MINISTRY OF JUSTICE

**Wairoa River and tributaries**

Areas referred to in the deed of settlement between  
 Ngāi Tai ki Tāmaki and the Crown

Approved as to boundaries:  
 12/9/14  
 for Ngāi Tai ki Tāmaki  
 11/9/14  
 for and on behalf of the Crown



ATTACHMENTS

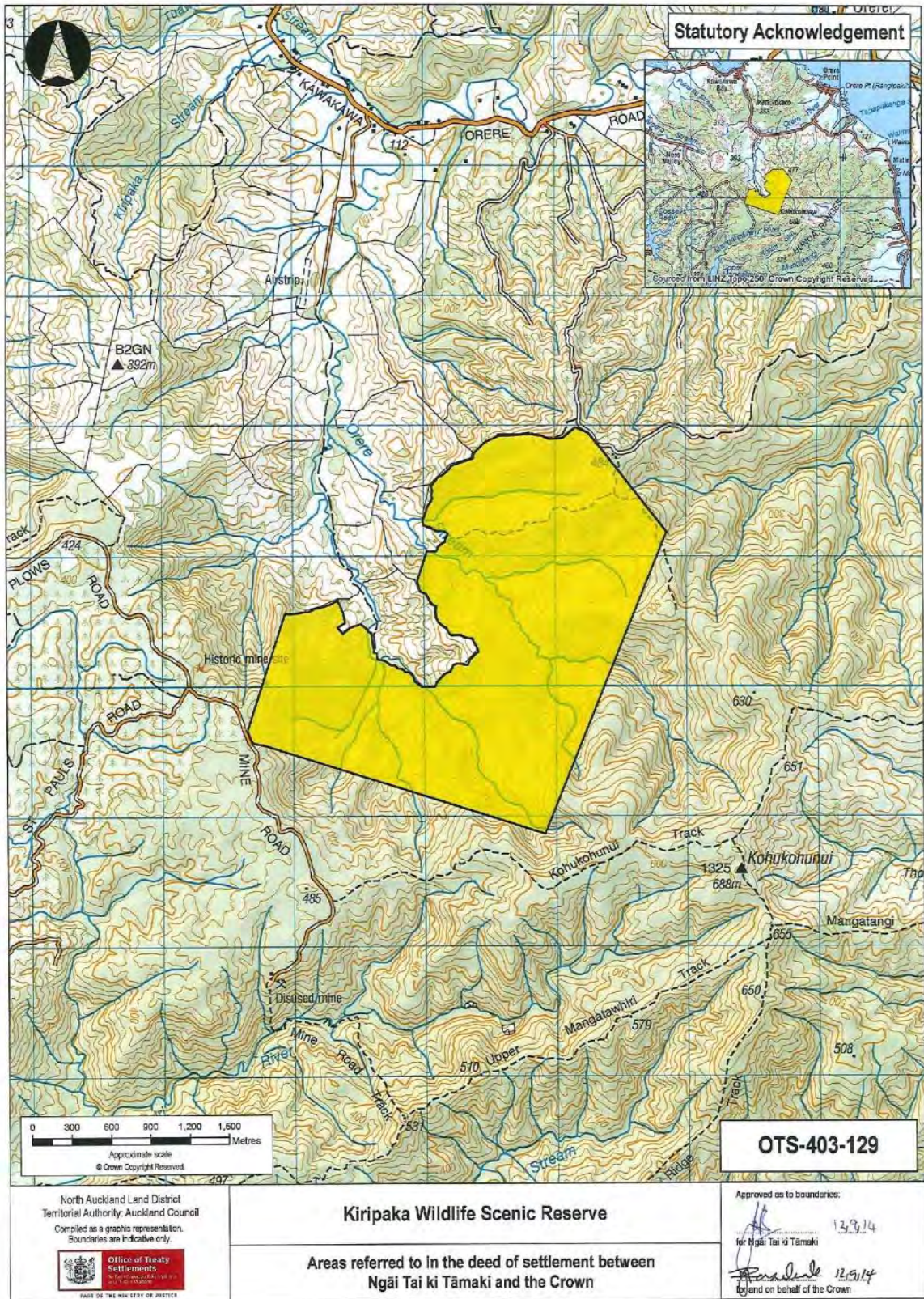
2: DEED PLANS





ATTACHMENTS

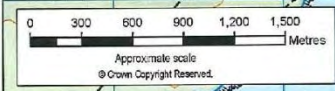
2: DEED PLANS





ATTACHMENTS

2: DEED PLANS



**Statutory Acknowledgement**



**OTS-403-130**

North Auckland Land District  
 Territorial Authority: Auckland Council  
 Compiled as a graphic representation.  
 Boundaries are indicative only.

OFFICE OF TREATY SETTLEMENTS  
 DEPARTMENT OF THE PRIME MINISTER AND CABINET  
 MINISTRY OF JUSTICE

**Motutapu Island Recreation Reserve**

Areas referred to in the deed of settlement between  
 Ngāi Tai ki Tāmaki and the Crown

Approved as to boundaries:

*[Signature]* 12.2.14  
 for Ngāi Tai ki Tāmaki

*[Signature]* 12.2.14  
 for and on behalf of the Crown



**3 DRAFT SETTLEMENT BILL**